

IoT Device Buying Checklist

What to Know Before Bringing a Smart Device Home

Before You Buy

- ☐ Research brand/model reputation
- ☐ Check if the device is still supported
- ☐ Read the privacy policy
- ☐ Supports local (offline) control?
- ☐ Works with your smart home platform?

Security Features

- ☐ Regular firmware updates available?
- ☐ Supports two-factor authentication?
- ☐ Can you change default login info?
- ☐ Uses encryption (HTTPS, TLS)?

App & Cloud Use

- ☐ App has good reviews?
- ☐ Cloud required to function?
- ☐ App requests minimal permissions?

Longevity & Compatibility

- ☐ Part of a trusted smart ecosystem?
- ☐ Matter-compatible or future-ready?
- ☐ Usable without creating an account?

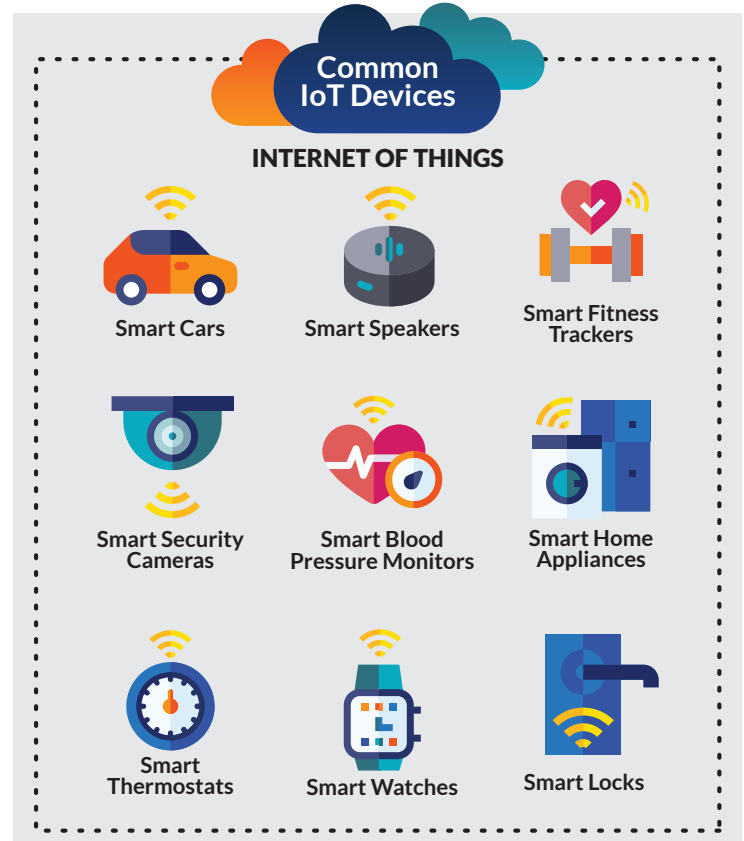
Total Cost of Ownership

- ☐ Any hidden fees (e.g., subscriptions)?
- ☐ Is customer support available?



Outreach Materials

Scan the QR code to download customizable community resources.



Contact Us

Have questions or need additional information?
We're here to help.