

DNA and Cold Cases

Using SNP Genotyping to Solve Crimes: The Cold Case of April Tinsley

Steven Armentrout, Ph.D.

Founder and CEO, Parabon

Detective Brian Martin

Fort Wayne (Indiana) Police Department

17 July 2019

Chicago

Warning: This presentation contains
graphic sexual content

APRIL M TINSLEY



Timeline for April 1, 2022

11:30 am
April arrives
home/lunch

12:30 pm
April arrives
Nicole's house

12:30 – 2:30 pm
April & Nicole
playing @ local park

~ 3:05 pm
April leaves
Nicole's for home

~ 3:05 pm
Nicole goes
to Denise's

~ 3:10 pm
April arrives at
Denise's house

~ 3:35 – 3:45 pm
April's Mom walks
to Nicole's house

3:45 – 7:48 pm
Family/friends search
neighborhood

7:48 pm
April's Mom
Calls police

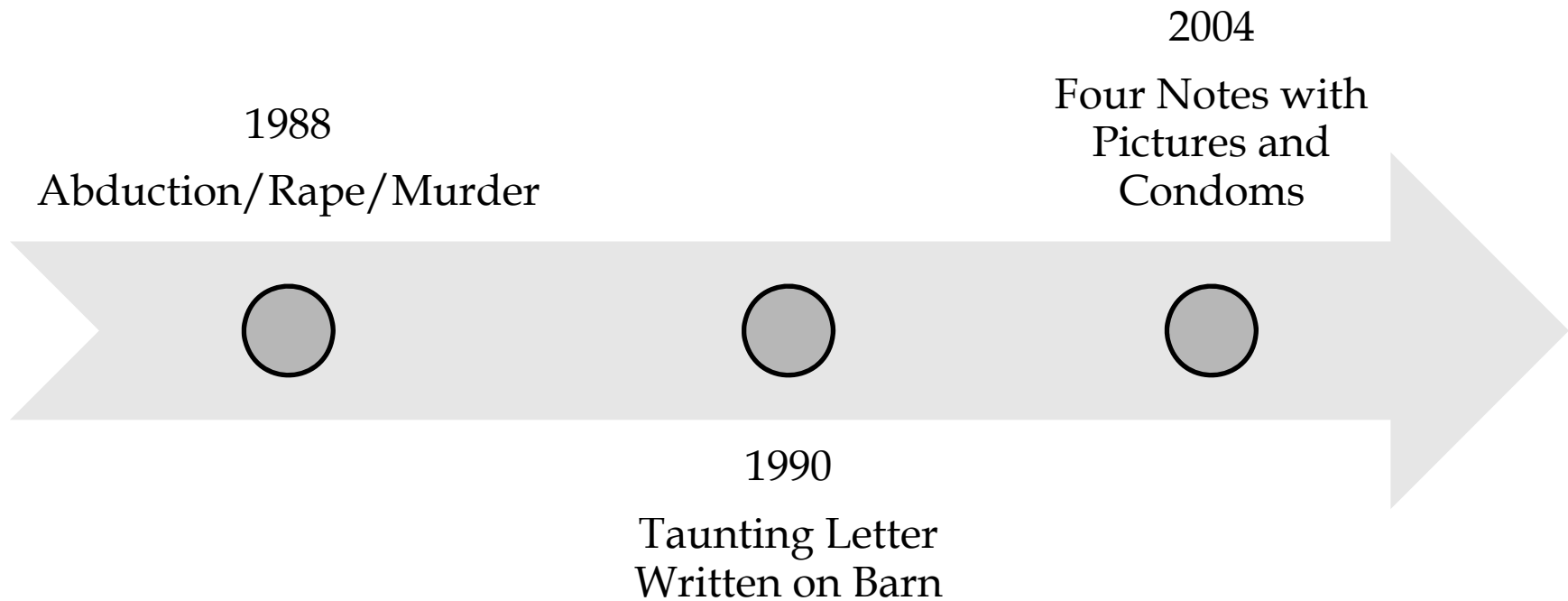
Window of Opportunity

*April's umbrella was still at Nicole's

APRIL M TINSLEY BODY DISCOVERED APRIL 4, 1988

- ▣ APRIL WAS FOUND 15 FEET OFF ROADWAY IN RURAL AREA.
- ▣ SIGNS OF SEXUAL ASSAULT.
- ▣ CAUSE OF DEATH SUFFOCATION.
- ▣ MISSING ONE SHOE, WHICH WAS LOCATED 200 FEET FROM HER BODY.

WHAT DO WE HAVE TO WORK WITH?



EVIDENCE

- ▣ THE SUSPECT GAVE US HIS DNA...
- ▣ THE SUSPECT GAVE US A SAMPLE OF HIS HANDWRITING...
- ▣ THE SUSPECT GAVE US A PARTIAL PICTURE OF HIMSELF...

BARN

Photo taken in 2006



BARN WRITING



NOTE #1, PICTURE, AND CONDOM LEFT ON BIKE



Note found in bicycle basket

NOTE FROM THE BIKE BASKET

Hi Honey I Been
Watching you I am
The same person that
kiddnaped a n Rape a n
kill April Kinsey
here is a present for you
you are my next victim
if you dont report this
to police on I dont see
this in the paper
tomorrow or on the
local news

1. "Hi Honey"
2. Stalking Reference
3. Demand for media attn.
4. Threat to "blow up house"
5. Enclosure

3/25/04

Or I well blow up you

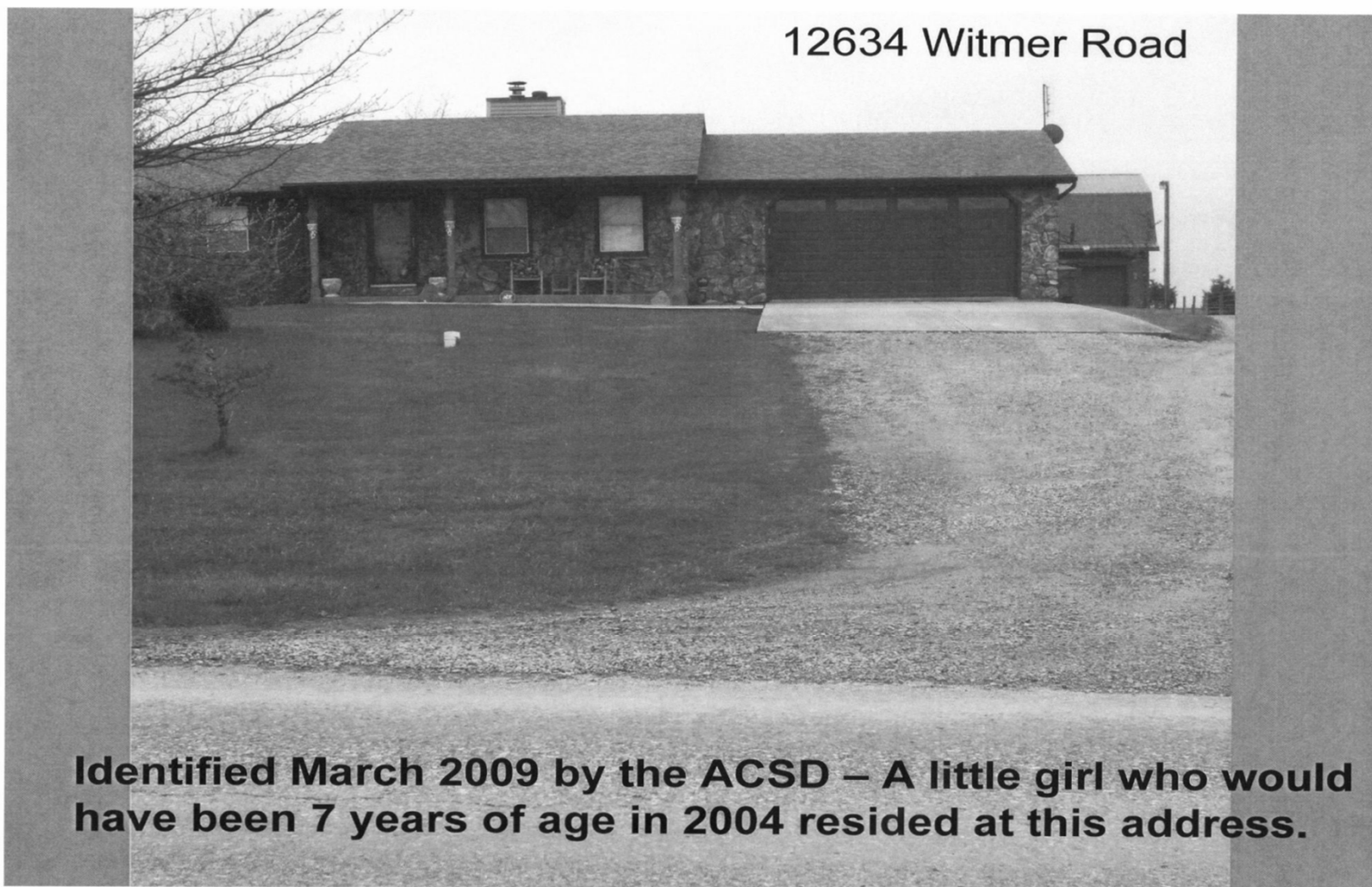
house. killing everyone
but you you will be miner

Double
underlining

**Written in pencil on yellow
lined legal paper from a pad**

NOTE #2, CONDOM DISCOVERED

03-27-2004



Identified March 2009 by the ACSD – A little girl who would have been 7 years of age in 2004 resided at this address.

THE “PRESENT”



NOTE # 2

Hi Honey I Been
Whating you here is
some cum for you
I am the same
Person our knapped
a n Rapean murder
Aproal tinsley you
Our next Ha/Ha
an if i dont see
anything about this on
the new pape are on the
tv news I will blow
up you hce killing
you f d m l y g n y u will be
mide for ever

Use of
"ha ha"

Note #2

3/27/04

+

Condom

(Gray duct tape?)

NOTE #3, AND CONDOM DISCOVERED 06-12-2004



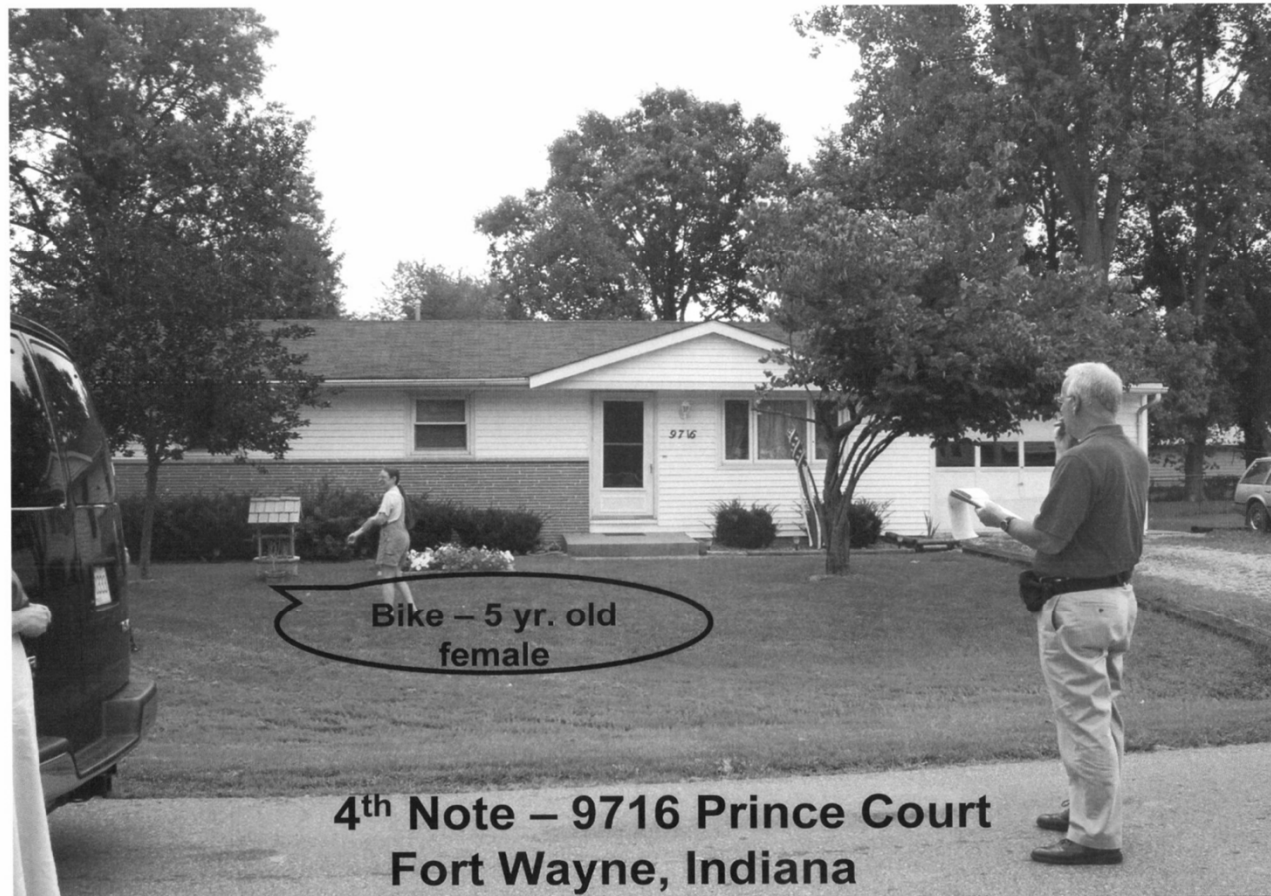
3rd Note – 12902 Indiana Street, Grabil, Indiana
Found on a 7 yr. old girl's bike in her side yard

NOTE # 3

JUN 12/04 ORIGINAL
6-12-04
Hi honey ~~Id~~ I been
watching here is some
my cam for you
I am the same person
on kidnapped Rape and
kill April tinsley and
you are next if I see you
out alone and if I don't
see anything about this
in newspaper or tv news
I will blow up your house
I have planted Bombs
some in your house

Note #3
6/12/04
(date notated)
+
Condom

NOTE #4, LETTER AND PICTURE DISCOVERED ON BIKE 06-25-2004



LETTER #4

6-25-04
Hi Honey i Beem
Watching you here i's
some pitcher of my
Dick when it's hard
Just for you I can't
wait to get me hand in
you so i can fuck you
pussy, mouth an ass
cum in all thres Just
Like you Dad does

More sexually
graphic/vulgar
in tone than
the other
notes...contains
Polaroids, no
condom.

Note #4
6/25/2004
(date notated)

PICTURE WITH LETTER # 4



FBI B.A.U. ANALYSIS OF LETTERS

LINGUISTIC ANALYSIS

BARN GRAFITTI in 1990 and FOUR NOTES in 2004 WERE ALL WRITTEN BY THE SAME PERSON.

WRITER IS A WHITE MALE NATIVE BORN TO U.S.

WRITER IS ATTEMPTING TO DISGUISE HIS TRUE INTELLECTUAL/EDUCATIONAL LEVEL.

DNA RESULTS WERE RETURNED IN 2005

- ▣ The DNA profile from the semen found in April's underwear in the 1988 homicide is consistent with the DNA from the semen found in the 3 condoms left in the notes in 2004
- ▣ Unidentified latent prints found on the note(s)
- ▣ -Negative in AFIS / Negative in CODIS

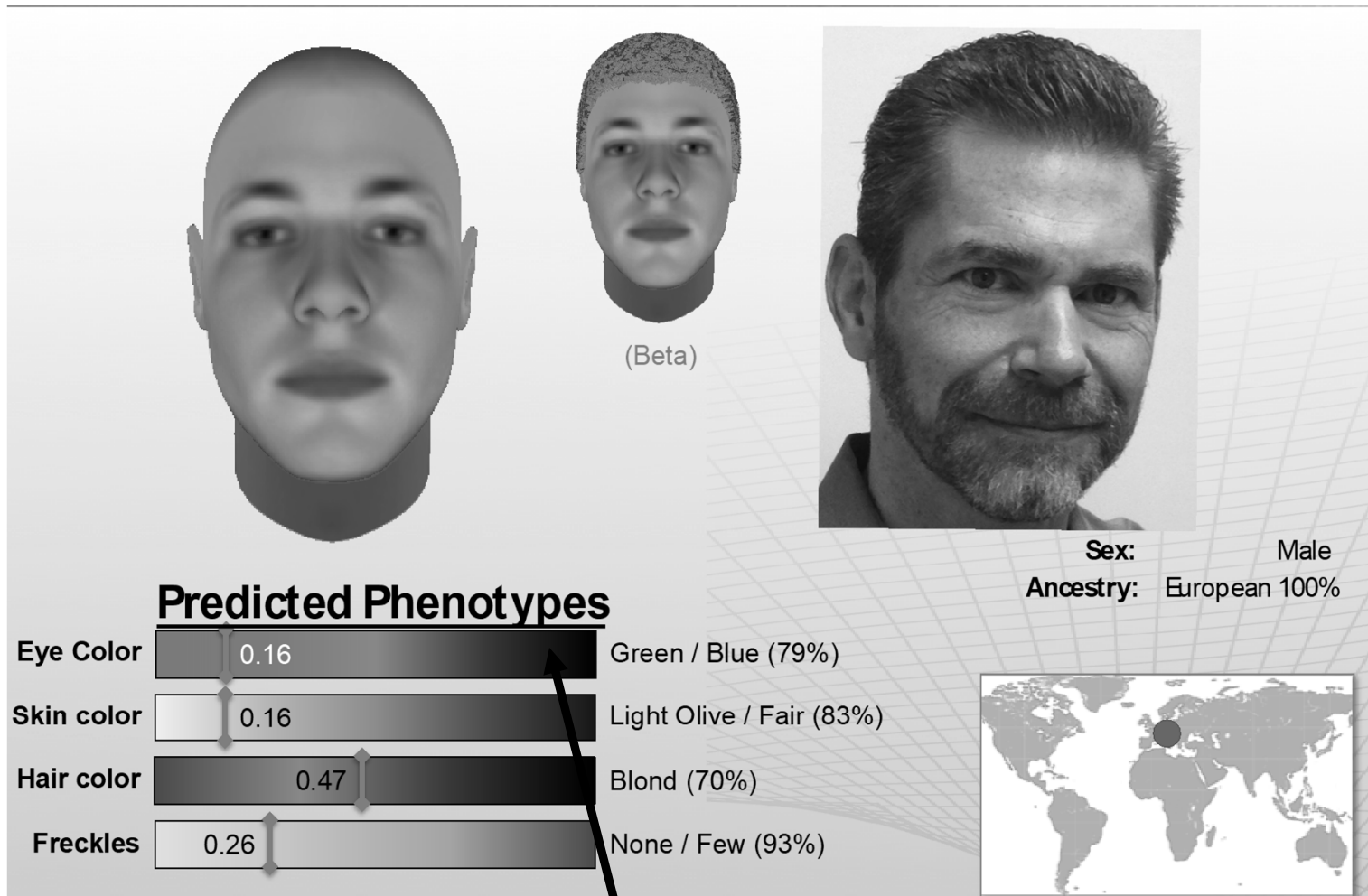
THE SUSPECT LIST

- THE CASE WAS VERY HIGH PROFILE.
- THE SUSPECT LIST WAS OVER 1,300 AT THE TIME OF THE ARREST.
- WE HAD ELIMINATED OVER 900 SUSPECT FROM THE LIST (DNA, JAIL RECORDS).
- THIS CASE WAS FEATURED ON AMERICA'S MOST WANTED, ON THE CASE WITH PAULA ZAHN, CRIME WATCH DAILY, NATIONAL NEWS, AND LOCAL NEWS.

PARABON-FWPD TIMELINE

- Mar 2009: Parabon began promoting forensic use of SNPs to federal government
- Sep 2009: Received a DHS Phase I SBIR award
- Apr 2011: Received a DTRA SBIR Phase I award
- Mar 2012: Received DTRA SBIR Phase II award

PARABON-FWPD TIMELINE



PARABON-FWPD TIMELINE

- Mar 2009: Parabon began promoting forensic use of SNPs to federal government
- Sep 2009: Received a DHS Phase I SBIR award
- Apr 2011: Received a DTRA SBIR Phase I award
- Mar 2012: Received DTRA SBIR Phase II award
- Oct 2013: Presented Snapshot to NCMEC
- May 2014: NCMEC introduces Parabon to FWPD
- Jul 2014: FWPD ships DNA extract for April Tinsley case to CAFDA for genotyping
- Aug 2014: Parabon delivers Snapshot report to FWPD
1st casework sample analyzed with Snapshot

Snapshot Prediction Results

Composite Profile



04A015962-88F013861

PNL Reference #15D30M57-14-00028



Width



Depth



Predicted (■) & Excluded (☒) Phenotypes

Skin Color



Very Fair / Fair (98.2% confidence)

NOT Light Olive / Dark Olive / Dark (98.2% confidence) (Composite shown at age 50)

Eye Color



Hazel / Green (94.7% confidence)

NOT Blue / Brown / Black (94.7% confidence)

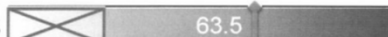
Hair Color



Brown / Black (96.0% confidence)

NOT Red / Blond (96.0% confidence)

Freckles



Few / Some (50.0% confidence)

NOT None (91.3% confidence)

Sex: Male ♂

Age: Unknown

Ancestry: Central/
Eastern European



Snapshot Prediction Results

Composite Profile

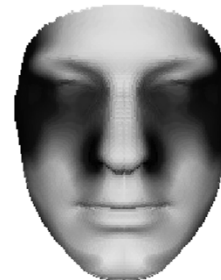


Snapshot #04A015962-88F013661

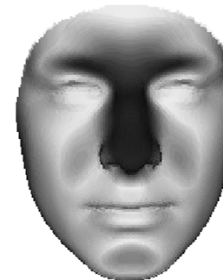
PNL Document #15D30P05 14 00028



Width



Depth



Magnitude



Predicted (■) & Excluded (⊠) Phenotypes

Skin Color 2.7
Very Fair / Fair (98.2% confidence)
NOT Lt Olive / Dk Olive / Dark (98.2% confidence)

Eye Color 45.0
Hazel / Green (94.7% confidence)
NOT Blue / Brown / Black (94.7% confidence)

Hair Color 57.6
Brown / Black (96.0% confidence)
NOT Red / Blond (96.0% confidence)

Freckles 63.5
Few / Some (50.0% confidence)
NOT Zero (91.3% confidence)

Sex: Male ☐

Age: Unknown
(Composite shown at age 50)

Body Mass: Unknown
(Composite shown at BMI 22, Normal)

Ancestry: Central/
Eastern European



FAST FORWARD

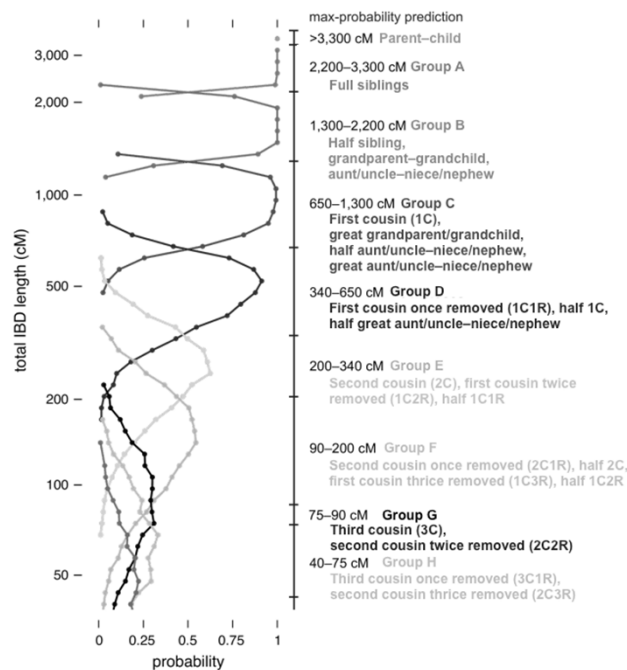
- DETECTIVES CONTINUED TO DO INTERVIEWS, COLLECT BUCCAL SWABS, CONDUCT SURVEILLANCE AT THE GRAVE SITE, AND MEMORIAL SITE.
- DETECTIVES CONTINUED TO USE LOCAL AND NATIONAL MEDIA TO GENERATE TIPS ON THE TINSLEY CASE.
- INFORMATION FROM PARABON WAS USED TO NARROW THE SUSPECT LIST (EYE COLOR, HAIR COLOR, ETC.)

PARABON 2018

- PARABON NANOLABS CONTACTS ME ON MAY 11, 2018. NEW GENETIC GENEALOGY TESTING AVAILABLE.
- PARABON IS CONFIDENT THAT THERE IS AN “ABOVE AVERAGE” CHANCE THAT THEY CAN IDENTIFY A SECOND COUSIN ONCE REMOVED, HALF-SECOND COUSIN, FIRST COUSIN THREE TIMES REMOVED, AND HALF FIRST COUSIN TWICE REMOVED.

PARABON 2018

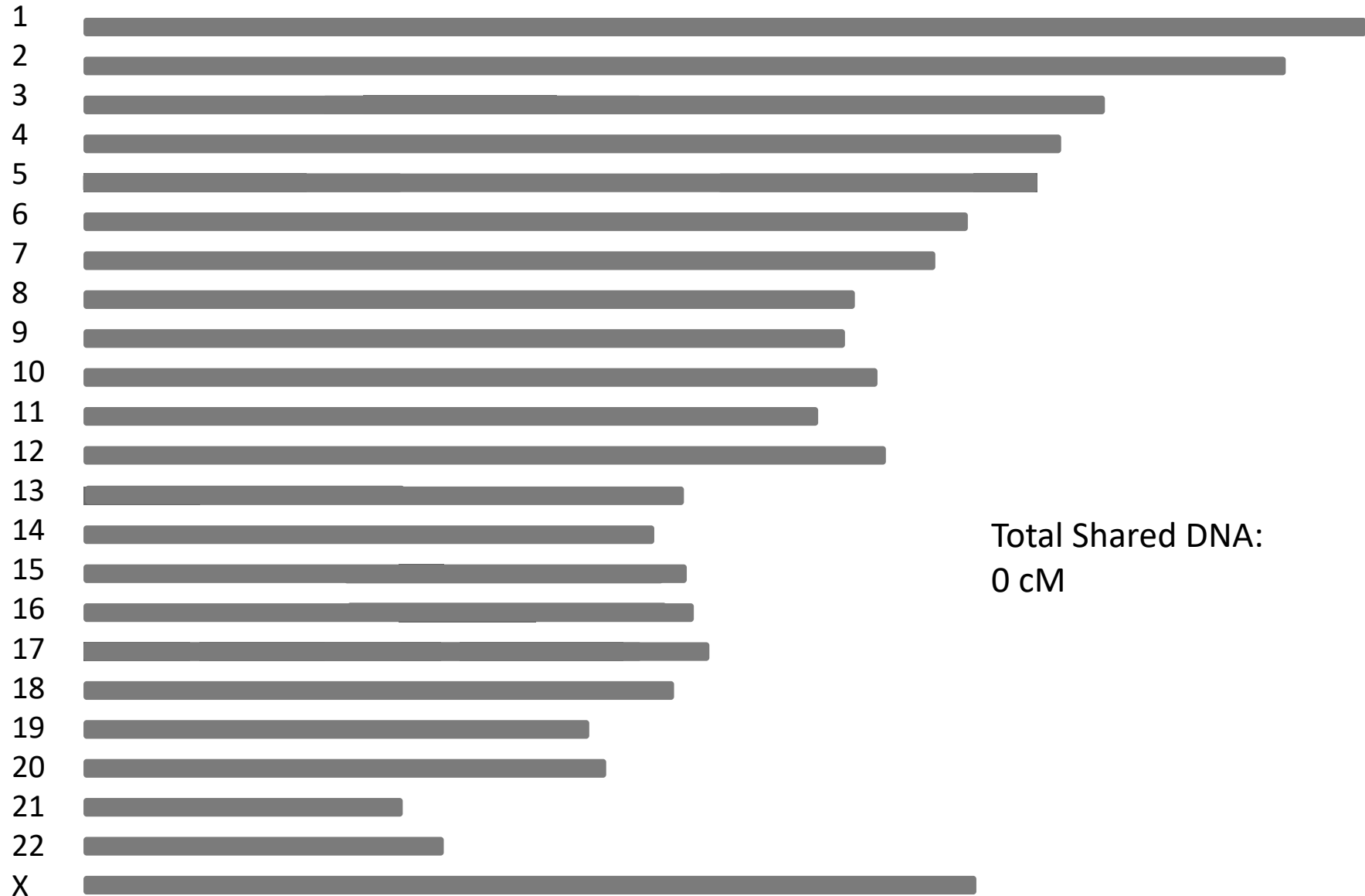
"Actually, no, we are saying **your case has an above average chance**. Sorry if that's not coming out clearly. Your case's top cM match is 131.6cM. Please see the screen capture below that I find to be fairly helpful. 90-200cM are the light green **group F**. They include **second cousins once removed, half-second cousins, first cousins thrice remove and half first cousin twice removed**. There is at least 1 individual who is ~131cM. Whether or not the majority of the family tree is on the databases, we won't know until our genealogist starts working it. ..."



Ball, Catherine A., et al.
Ancestry DNA matching (2016)

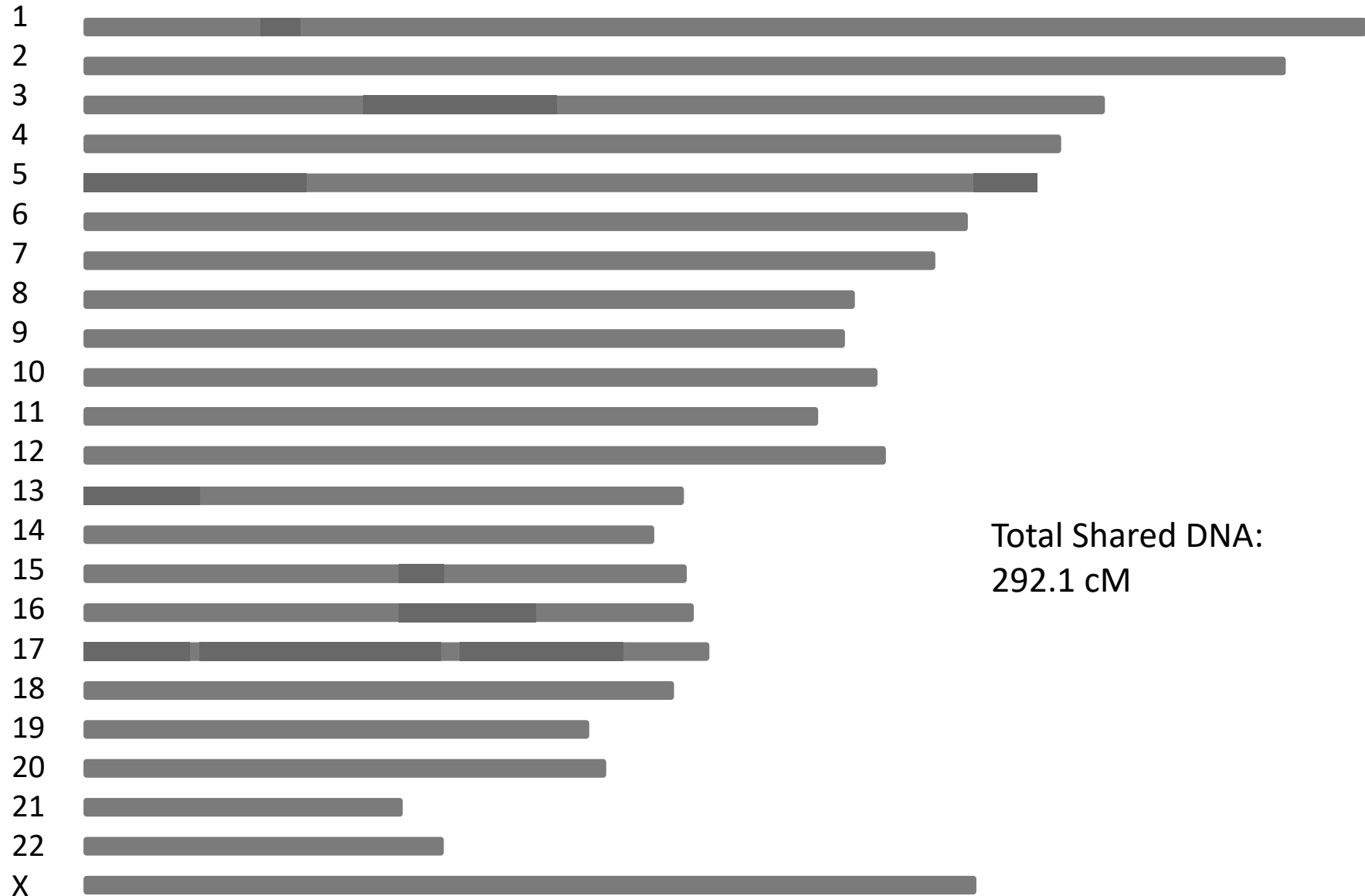
Annotated by Leah Larkin, Ph.D.

Genetic Genealogy (GG) Analysis



Total Shared DNA:
0 cM

Genetic Genealogy (GG) Analysis



Total Shared DNA:
292.1 cM

Genetic Genealogy (GG) Analysis



DNA Detectives Autosomal Statistics Chart

Created by Christa Stalcup

©THEDNADETECTIVES, 2016

cM (centiMorgans)^		Percentage (%) of Shared DNA^^		Group	Relationship	Notes
Average	Range	Average	Range			
3,600		50%			Parent - Child	
2650	2300 - 3900	37%	32%-54%	Group A	Full Sibling	Ancestry, FTDNA and GEDmatch (HIR only)
3600		50%				23andMe (FIR included)
1800	1300 – 2300	25%	18%-32%	Group B	Half Sibling Aunt/Uncle/Niece/Nephew Double First Cousin Grandparent/Grandchild	3/4 Siblings^^^
900	575 - 1330	12.5%	8%-18.5%	Group C	First Cousin (1C) Half Aunt/Uncle/Niece/Nephew Great-Grandparent/Great-Grandchild Great-Aunt/Uncle/Niece/Nephew	
450	215 - 650	6.25%	3%-9%	Group D	First Cousin Once Removed (1C1R) Half First Cousin (½ 1C) Half Great-Aunt/Uncle/Niece/Nephew	
224	75 - 360	3.125%	1%-5%	Group E	Second Cousin (2C) First Cousin Twice Removed (1C2R) Half First Cousin Once Removed (½1C1R)	
112	30 - 215	1.56%	0.42% - 3%	Group F	Second Cousin Once Removed (2C1R) Half Second Cousin (½ 2C) First Cousin Three Times Removed (1C3R) Half First Cousin Twice Removed (½ 1C2R)	
56	0 - 109*	0.78%	0% - 1.52%	Group G	Third Cousin (3C) Second Cousin Twice Removed (2C2R)	~10% of 3Cs will not share DNA*
30	0 - 75**	0.4%	0%-1%	Group H	Third Cousin Once Removed (3C1R) Other Distant Cousins	~50% of 4Cs will not share DNA**

^cM =Ancestry.com & FTDNA

^^Percentage of DNA = 23AndMe

^^^ 3/4 Siblings are a combination of half siblings and 1st cousins, FIRs are included.

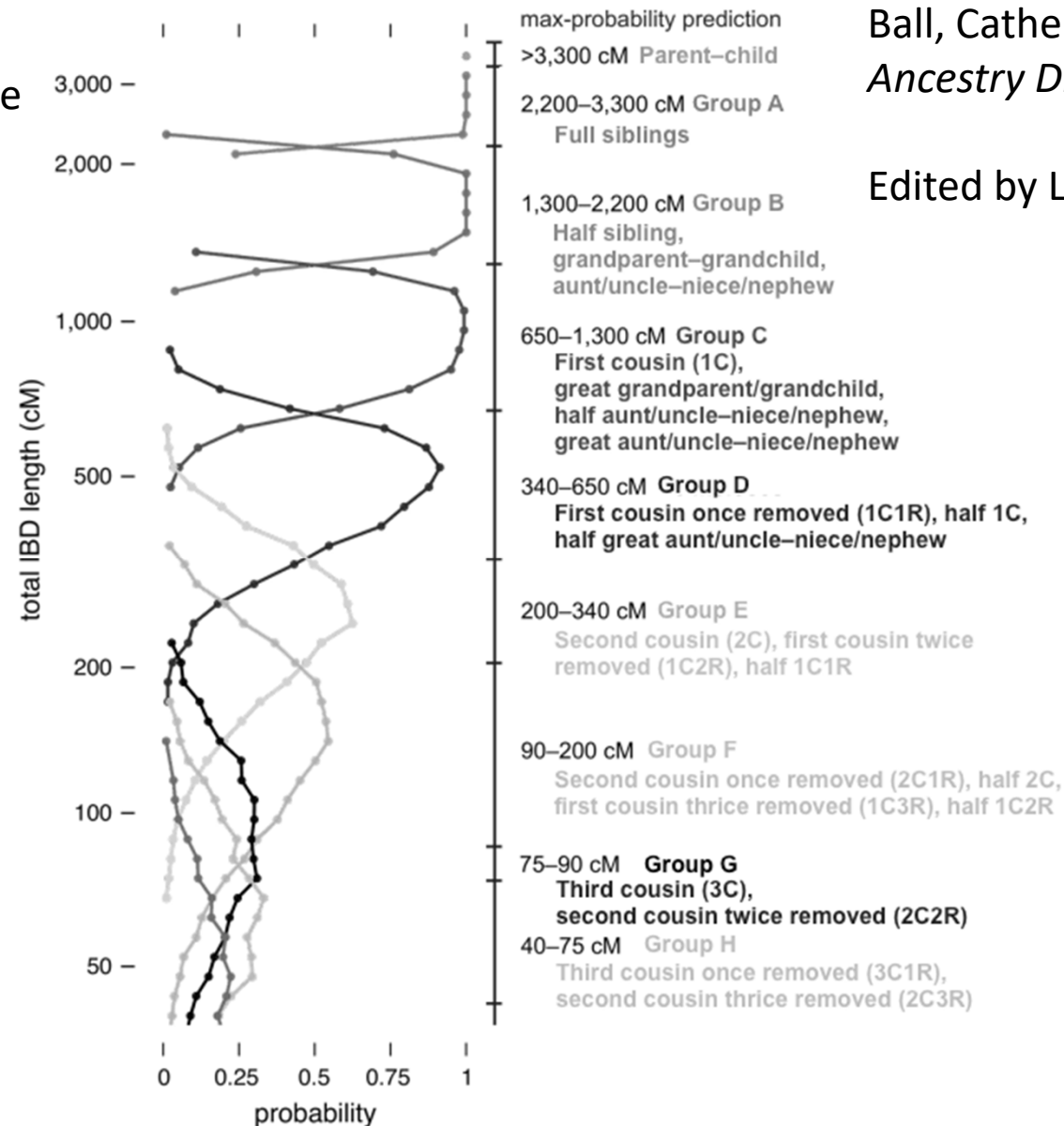
Groups A & B: 99% within the ranges given

Groups C – I: 95% within the ranges given

DNA Sharing Levels



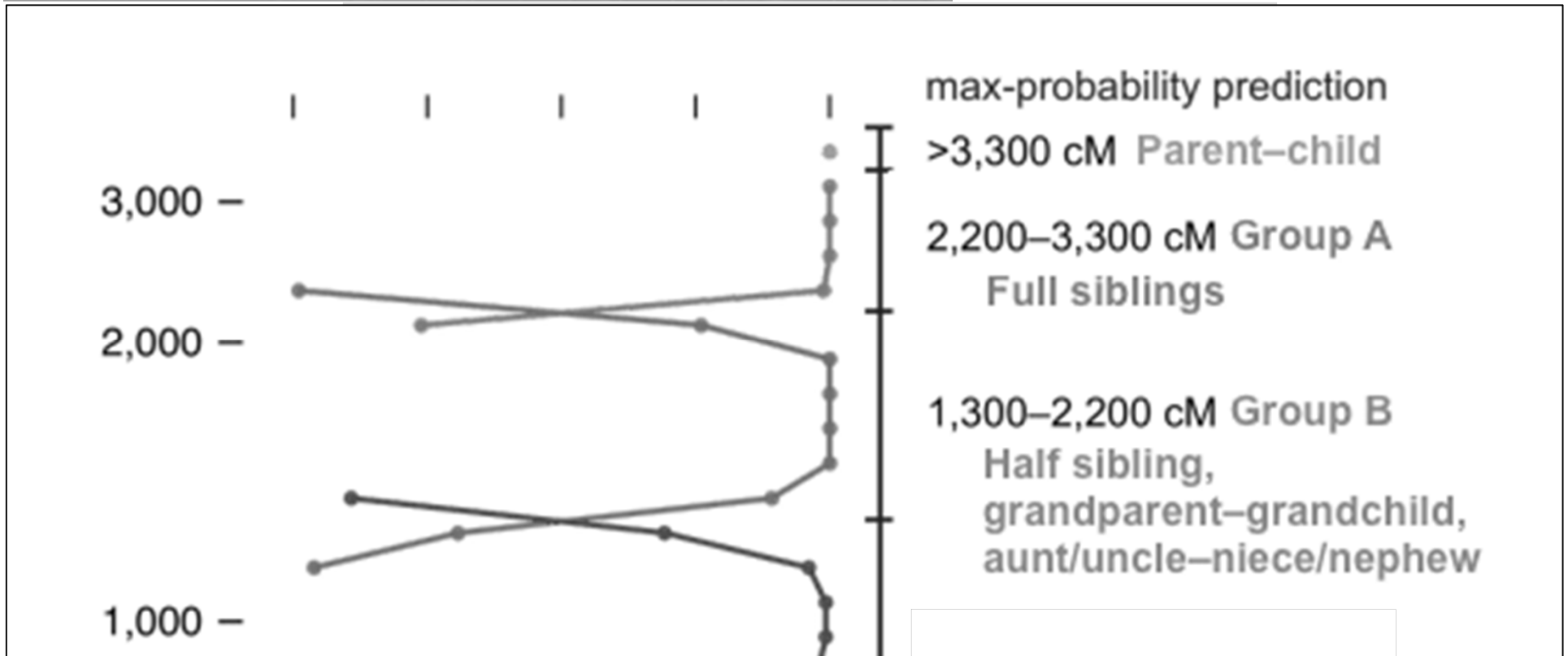
Different levels of sharing can equate to different types of genetic relationships



Ball, Catherine A., et al.
Ancestry DNA matching (2016)

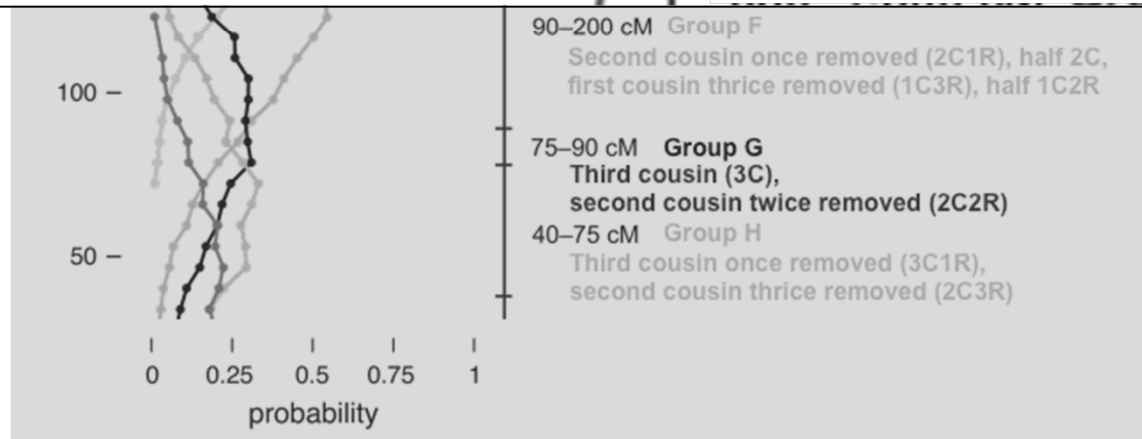
Edited by Leah Larkin, Ph.D.

DNA Sharing Levels



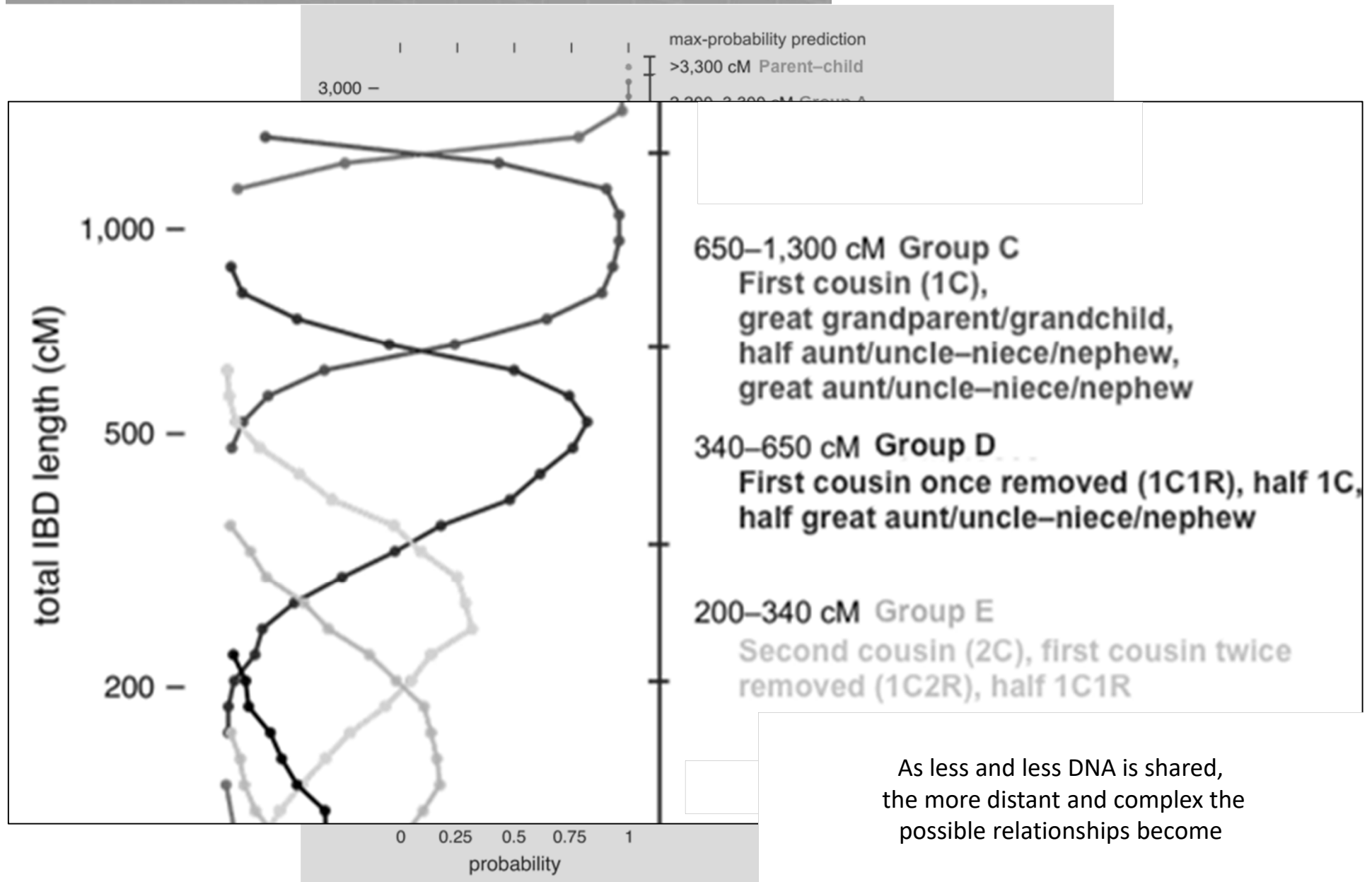
Graphic depicts the different possible relationships of DNA sharing levels.

Parent – Child & Full Siblings are straightforward with the most DNA sharing levels

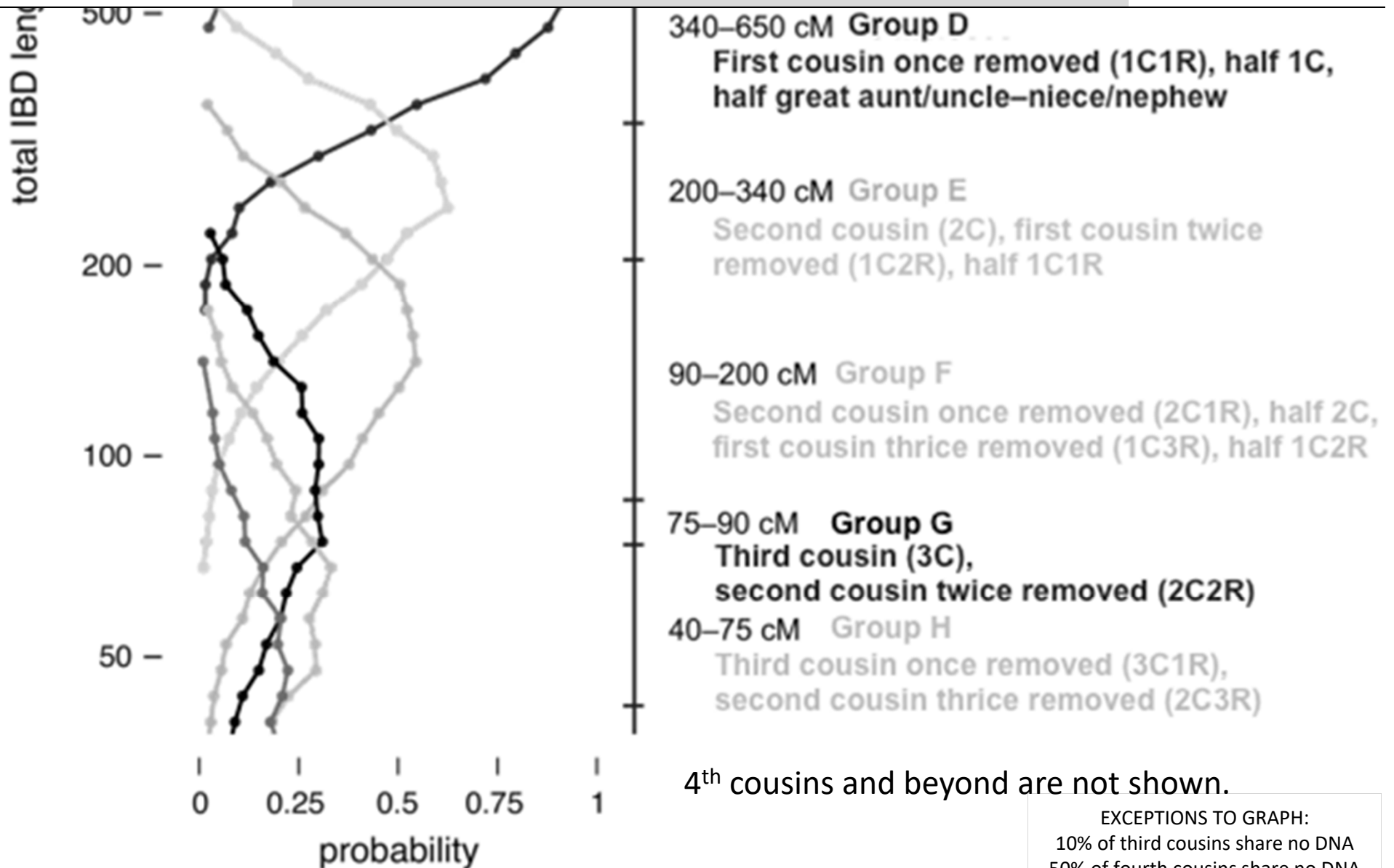


Group B (green) represents less DNA sharing. There are multiple DNA sharing options to research.

DNA Sharing Levels



DNA Sharing Levels



GG Tree Building Example 1



GG Tree Building Example 1

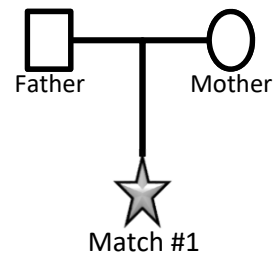
Using Phenotypic Ancestry Info

GG Tree Building Example 1

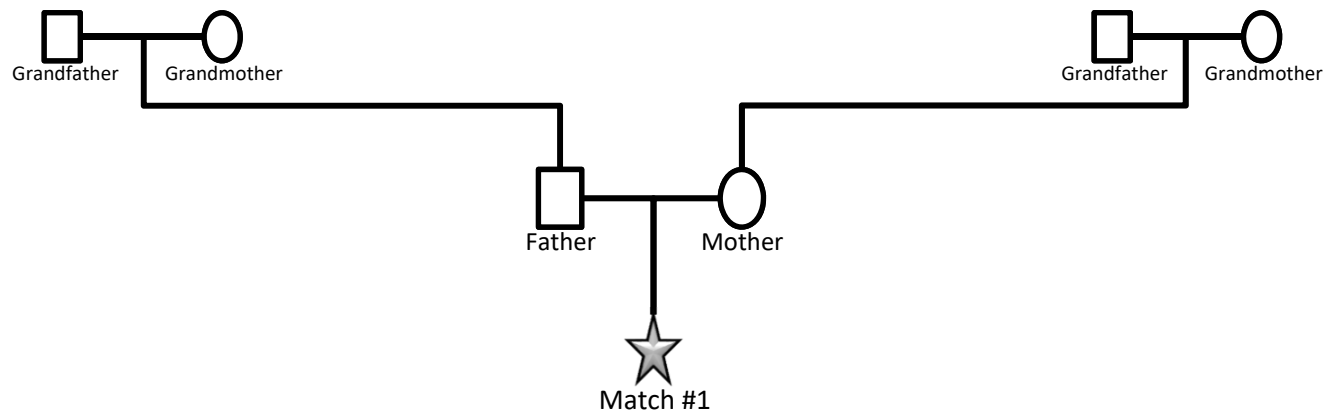


Match #1

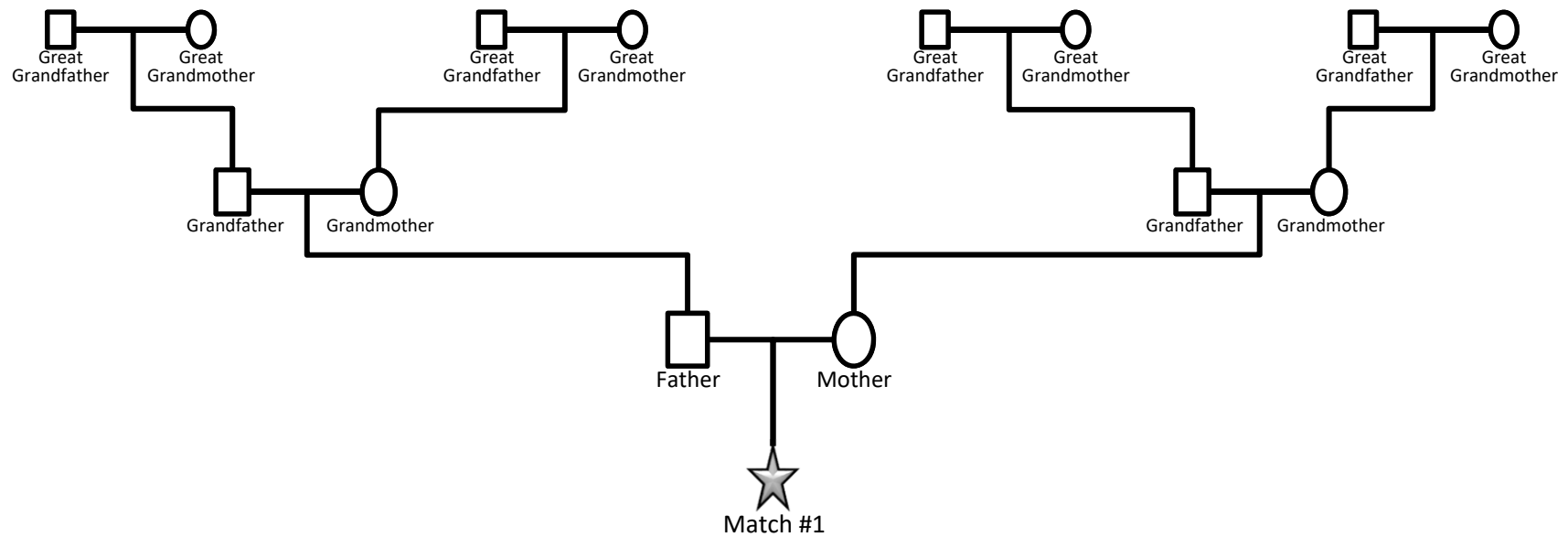
GG Tree Building Example 1



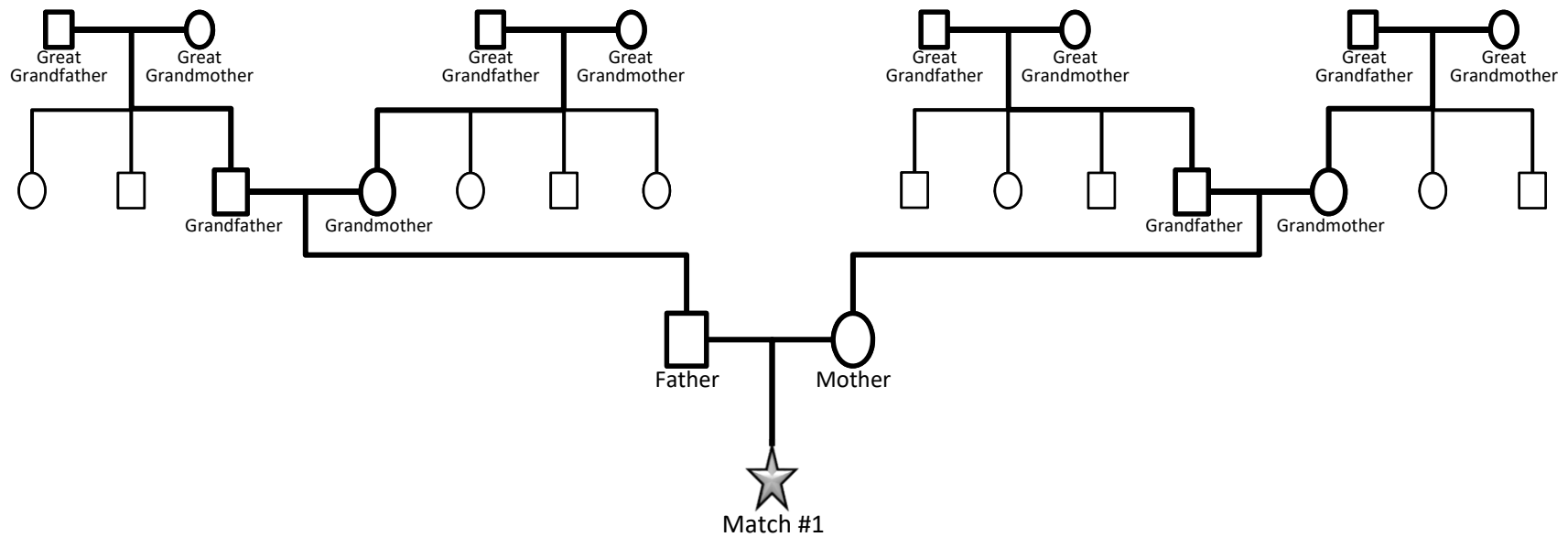
GG Tree Building Example 1



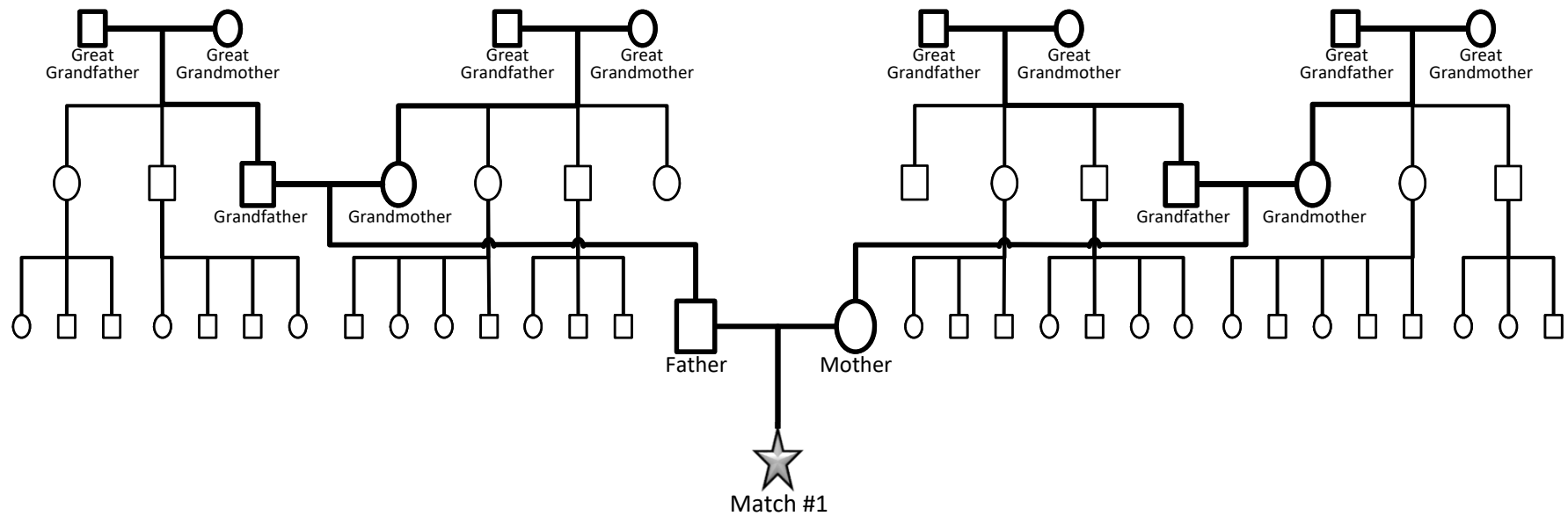
GG Tree Building Example 1



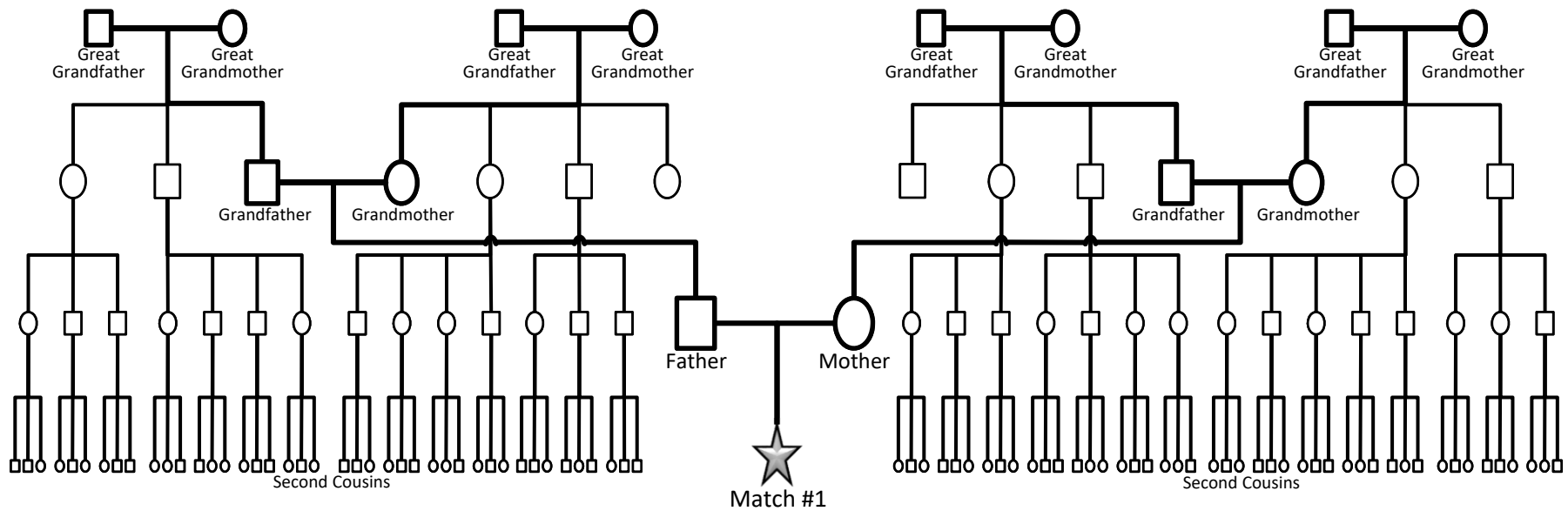
GG Tree Building Example 1



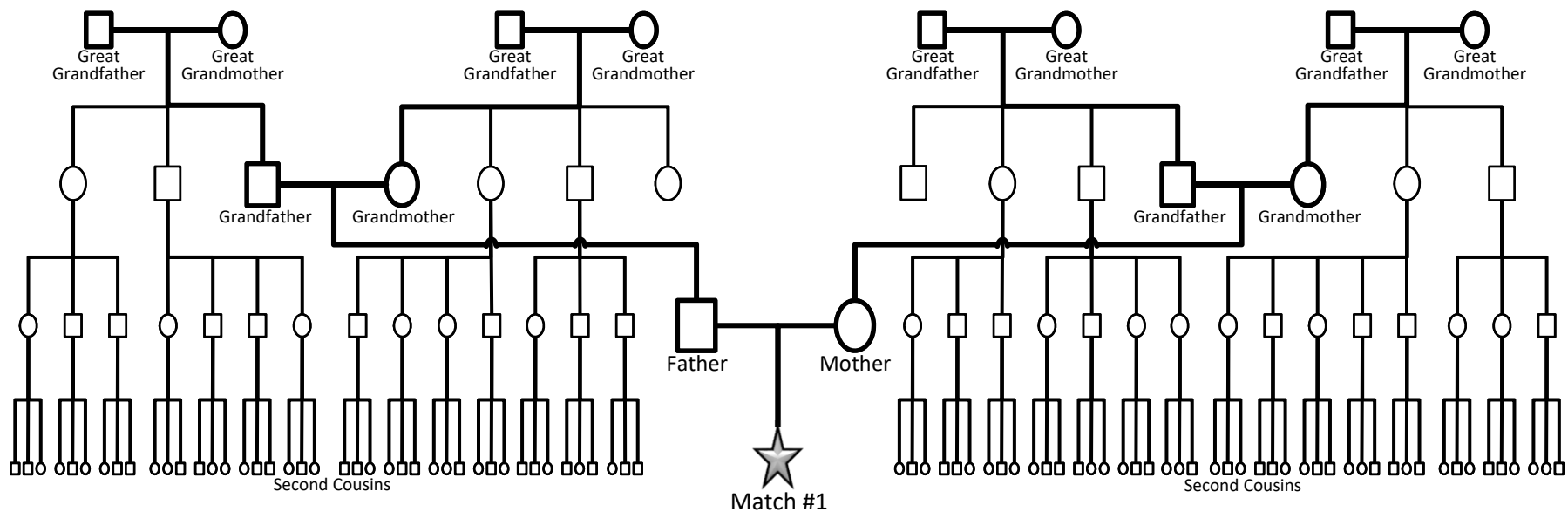
GG Tree Building Example 1



GG Tree Building Example 1

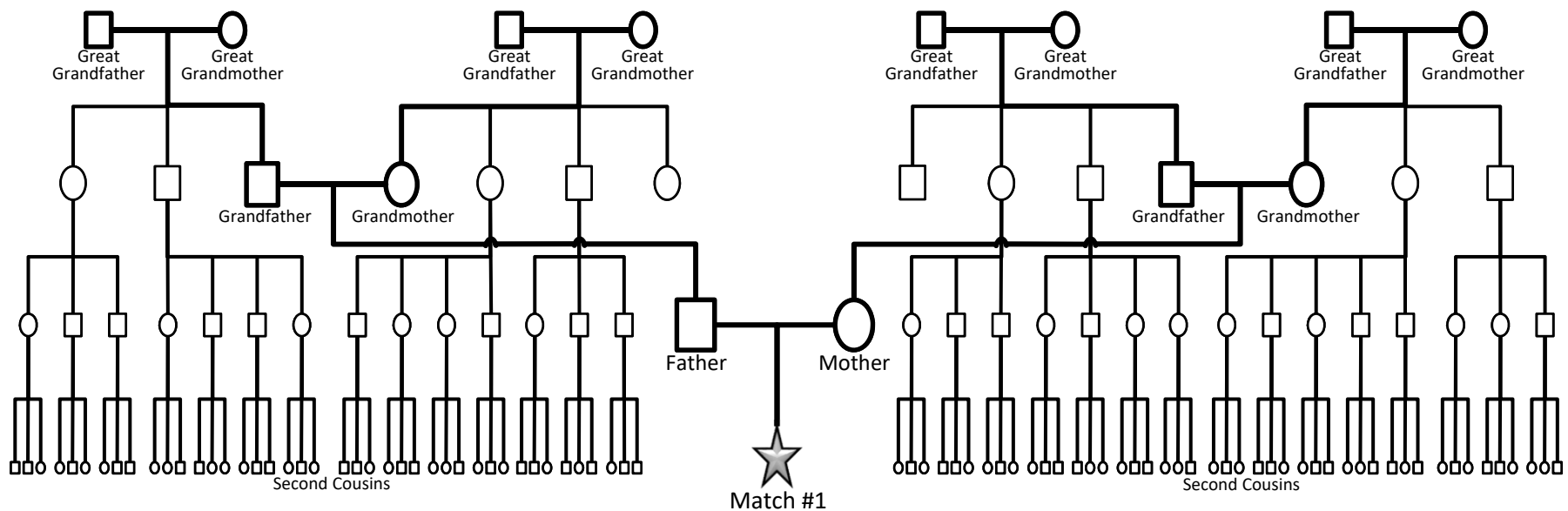


GG Tree Building Example 1



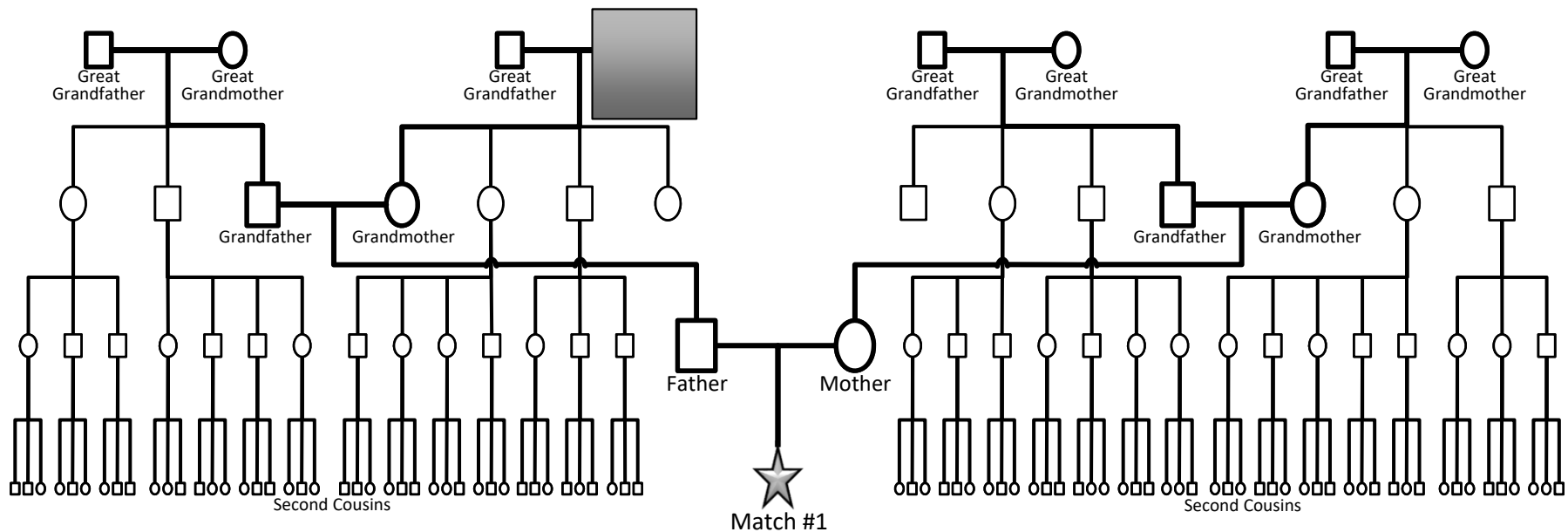
Crime Scene DNA Ancestry:
88% Northern European
12% Japanese

GG Tree Building Example 1



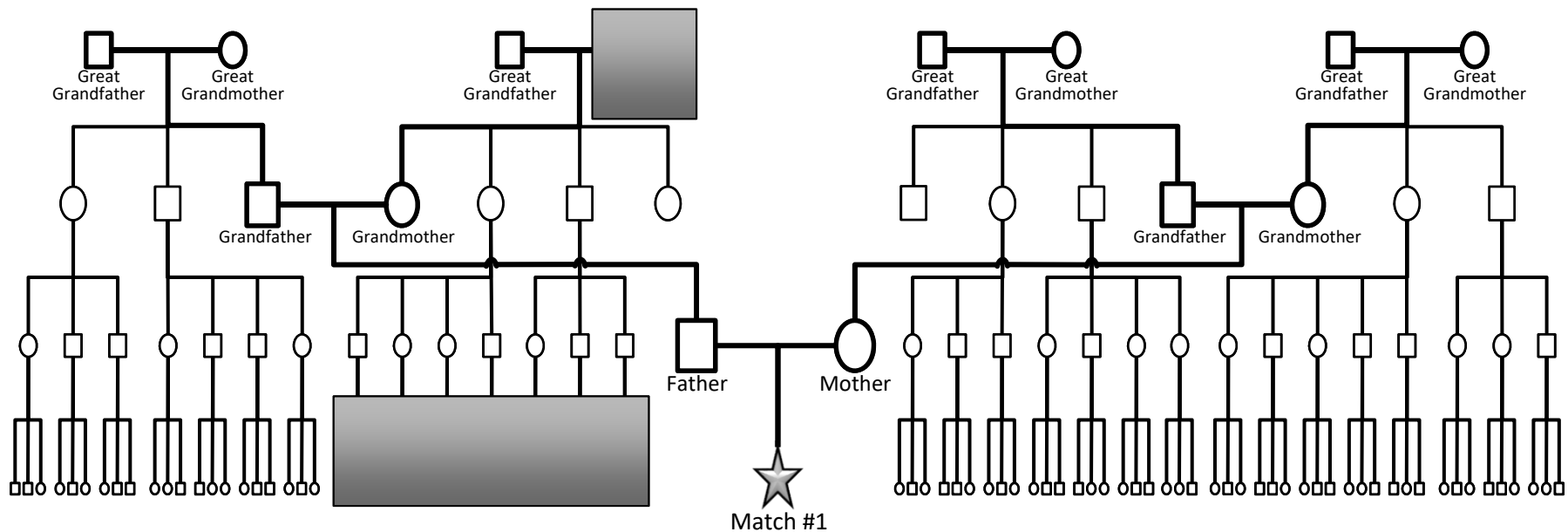
Crime Scene DNA Ancestry:
1/8 Japanese

GG Tree Building Example 1



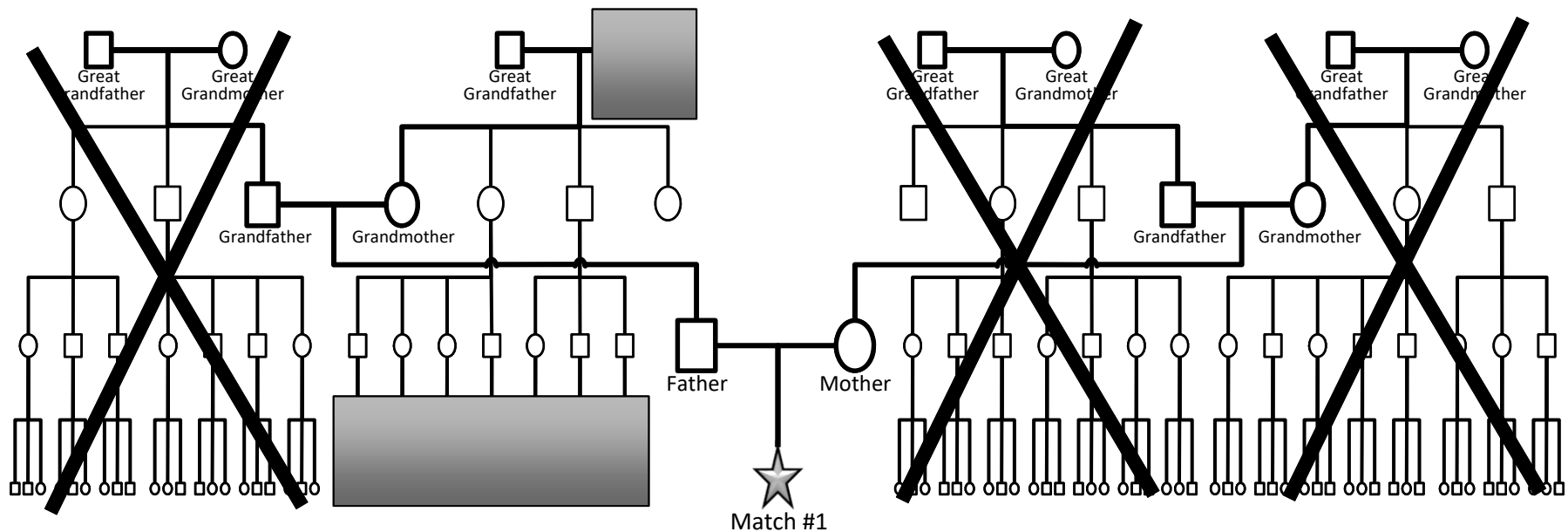
Crime Scene DNA Ancestry:
One Japanese Great-Grandparent

GG Tree Building Example 1



Crime Scene DNA Ancestry:
One Japanese Great-Grandparent

GG Tree Building Example 1



Crime Scene DNA Ancestry:
One Japanese Great-Grandparent

GG Tree Building Example 2



GG Tree Building Example 2

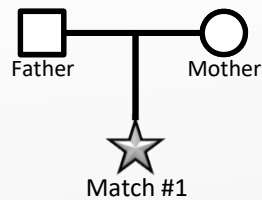
Deciphering between TWO Promising Matches

GG Tree Building Example 2

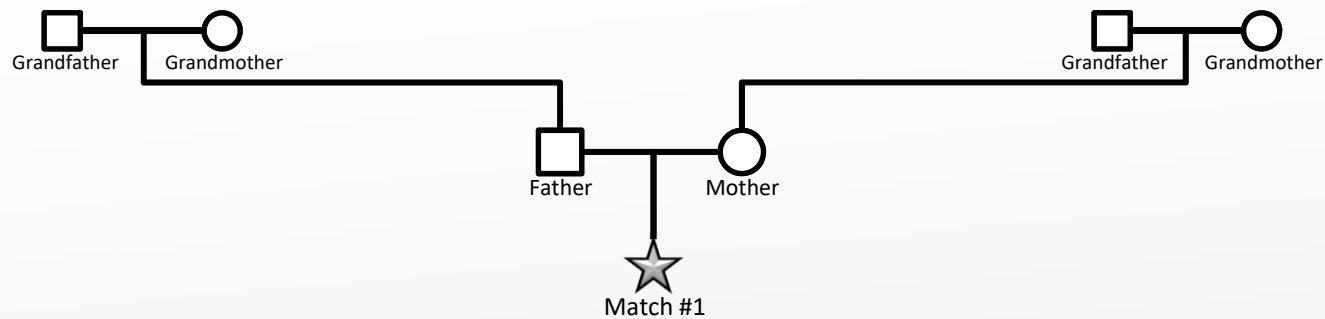


Match #1

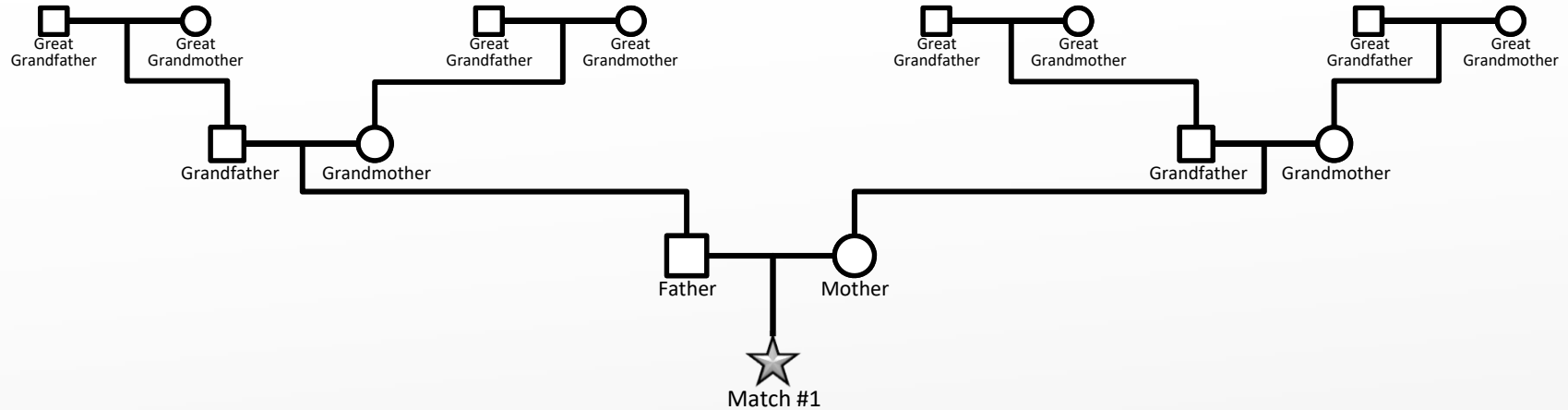
GG Tree Building Example 2



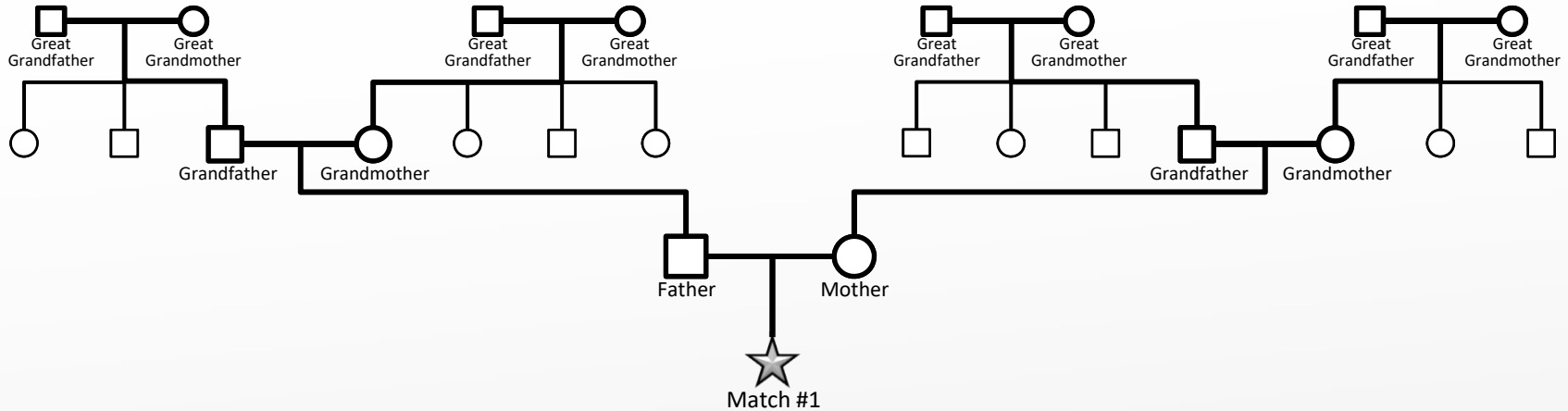
GG Tree Building Example 2



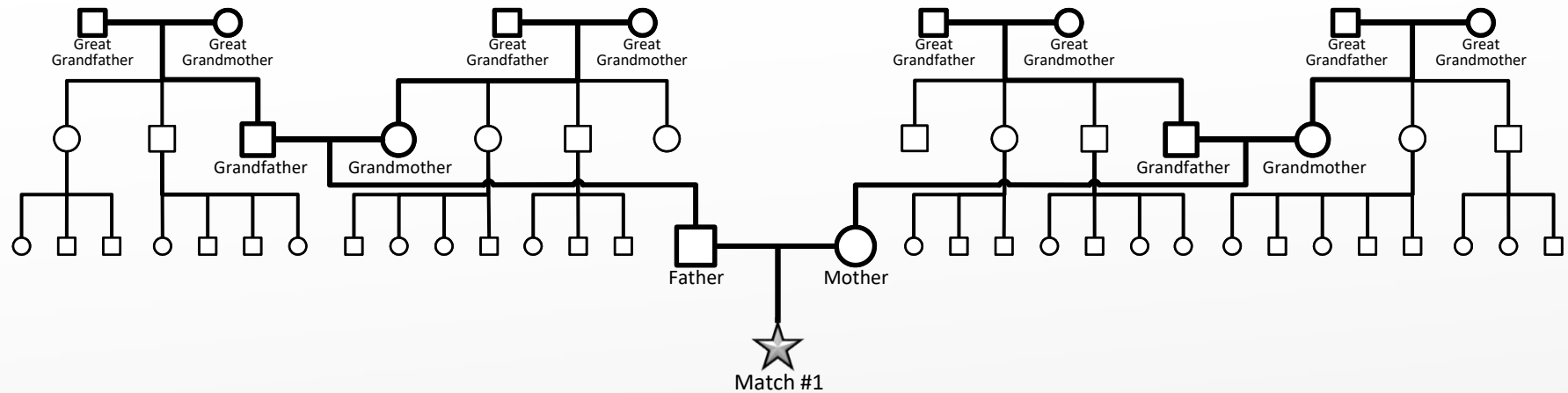
GG Tree Building Example 2



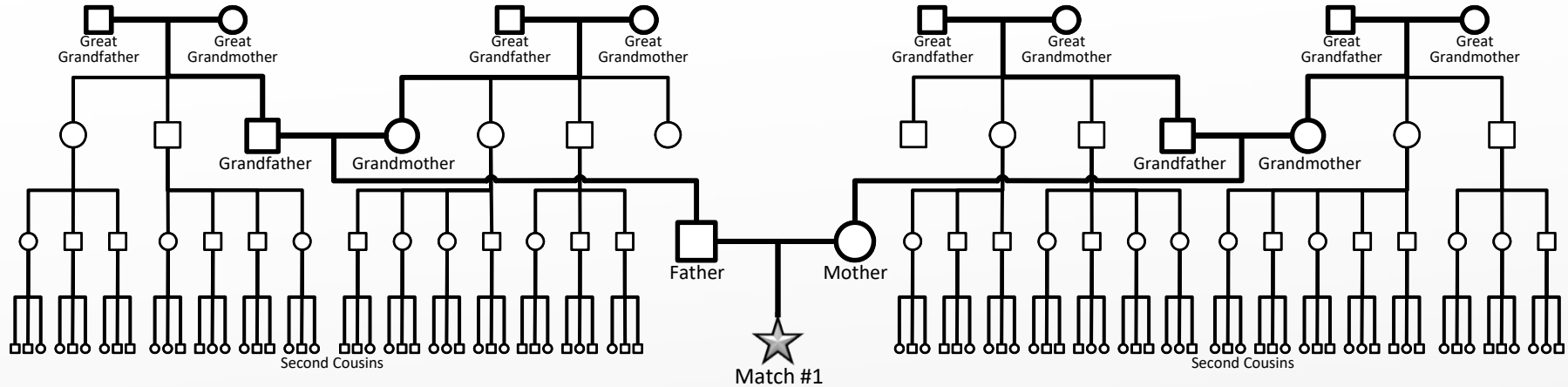
GG Tree Building Example 2



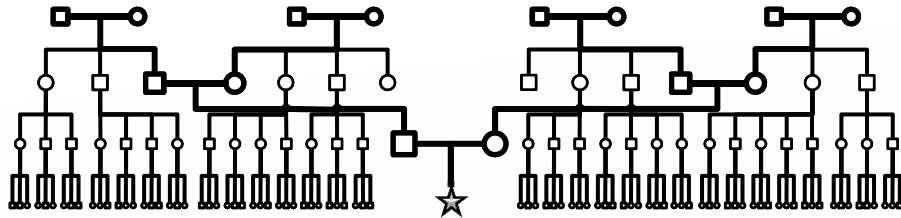
GG Tree Building Example 2



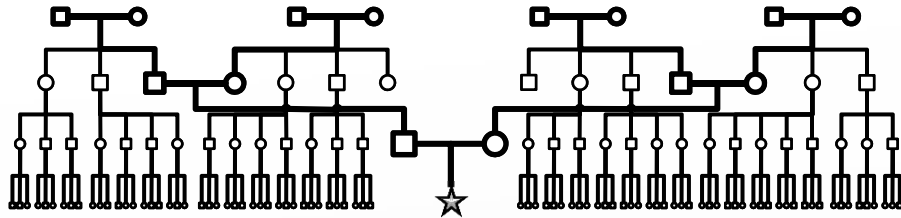
GG Tree Building Example 2



GG Tree Building Example 2

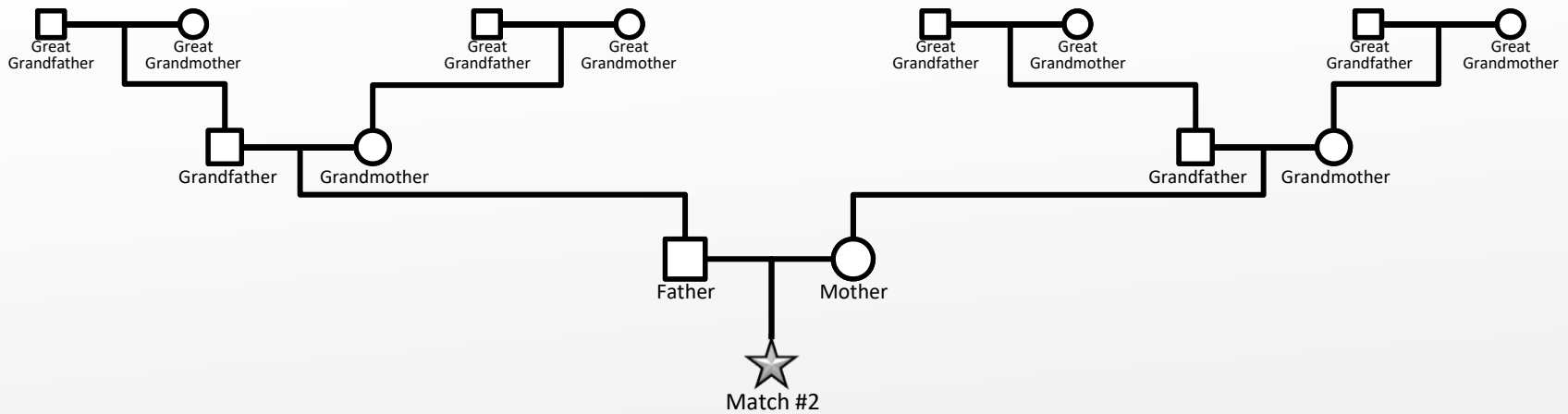
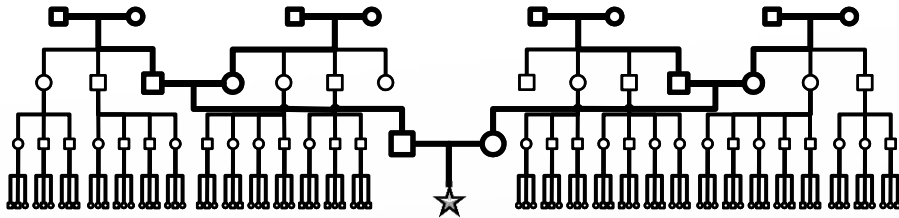


GG Tree Building Example 2

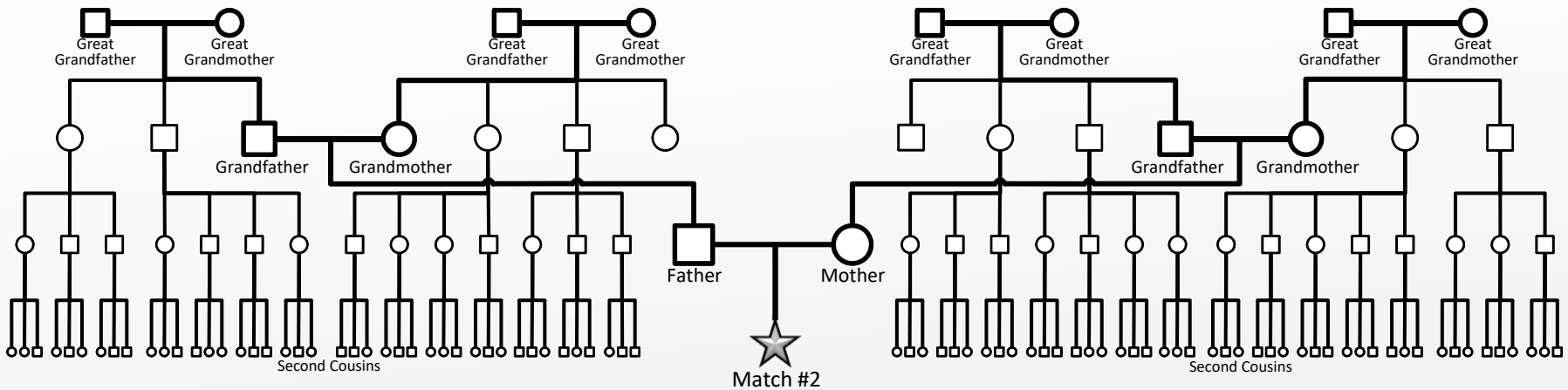
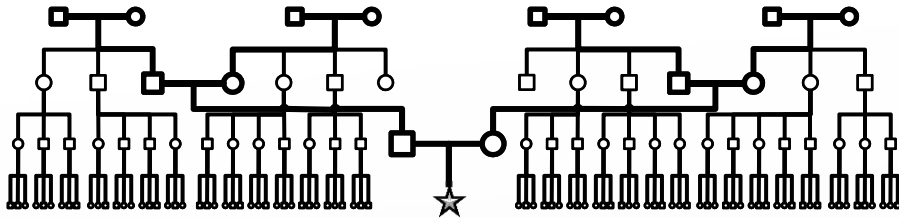



Match #2

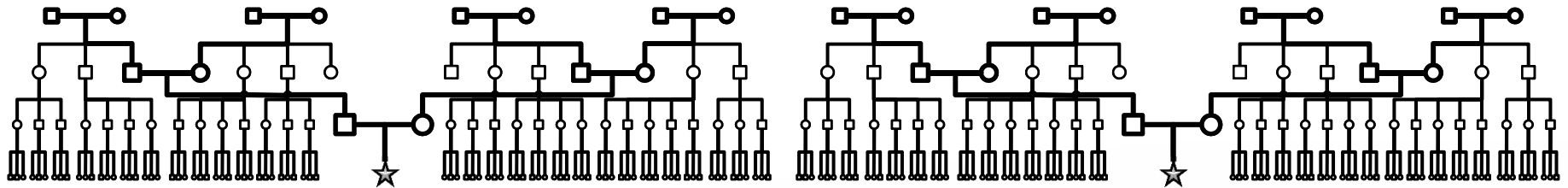
GG Tree Building Example 2



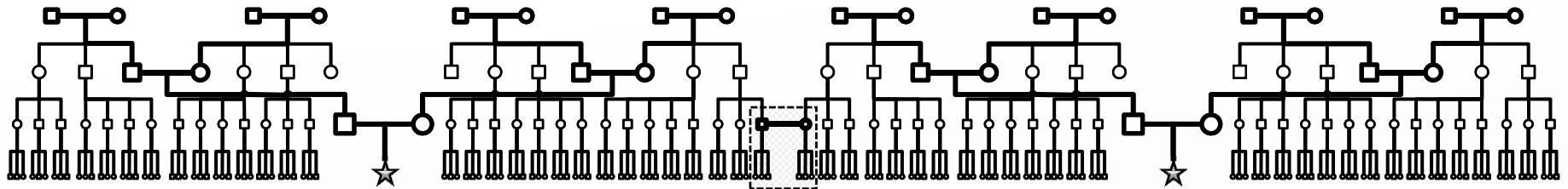
GG Tree Building Example 2



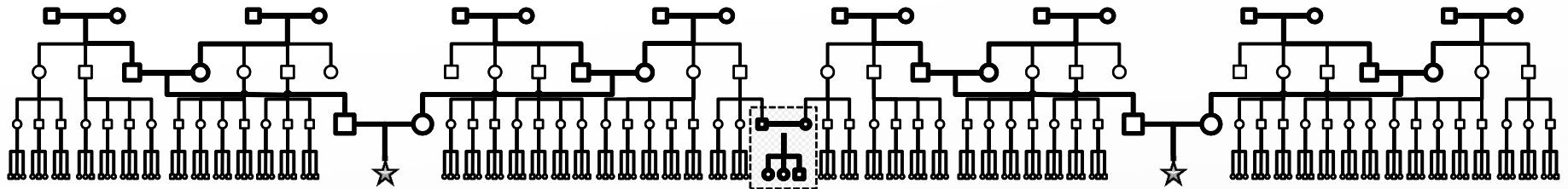
GG Tree Building Example 2



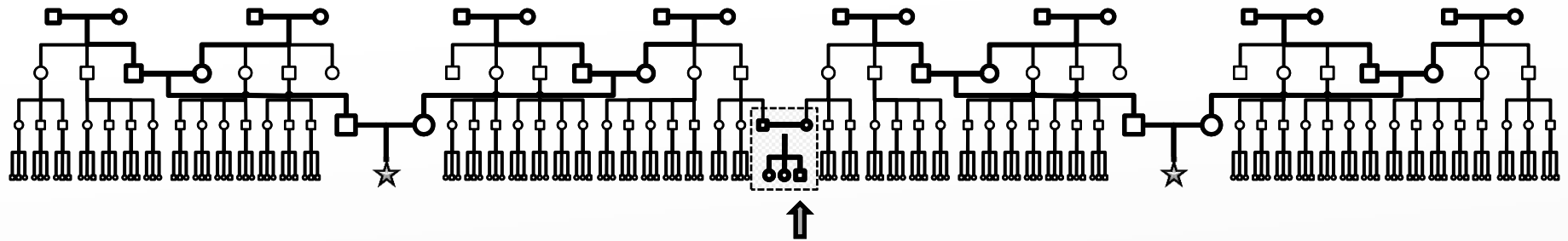
GG Tree Building Example 2



GG Tree Building Example 2



GG Tree Building Example 2



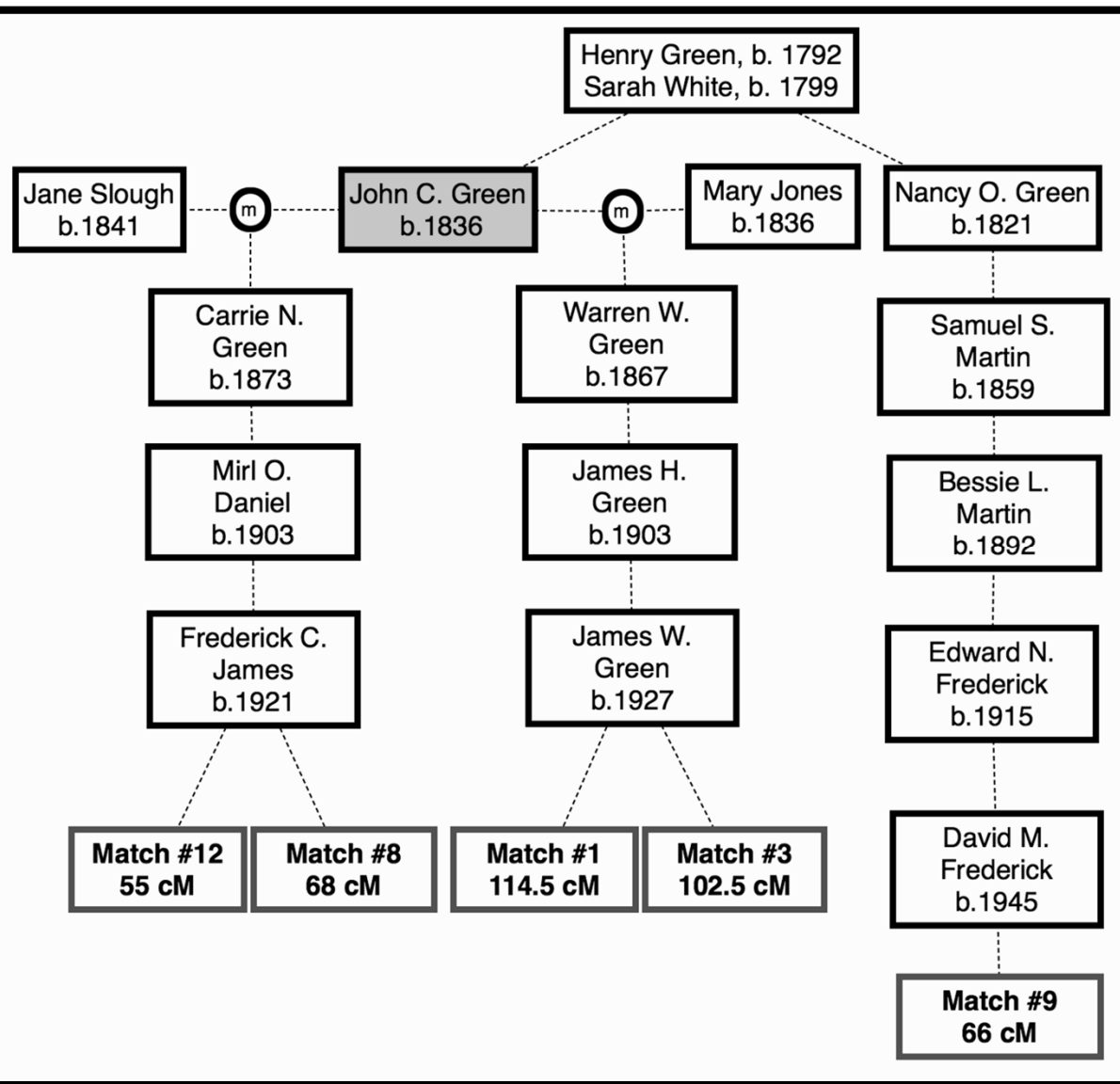
PARABON ON THE CASE



CeCe Moore
Chief Genetic Genealogist, Parabon

- One of the original pioneers of genetic genealogy
- Began leading high-profile identification investigations in 2010
- Founded DNA Detectives in 2013
- Performs research for *Finding Your Roots* on PBS
- Has led Parabon's genetic genealogy team to 61 "solves" since May 2018 (> 1 per week)
- Began working the April Tinsley case late June 2018

Building Genetic Networks



Grouping Matches

Tinsley Case = Four Separate Genetic Networks

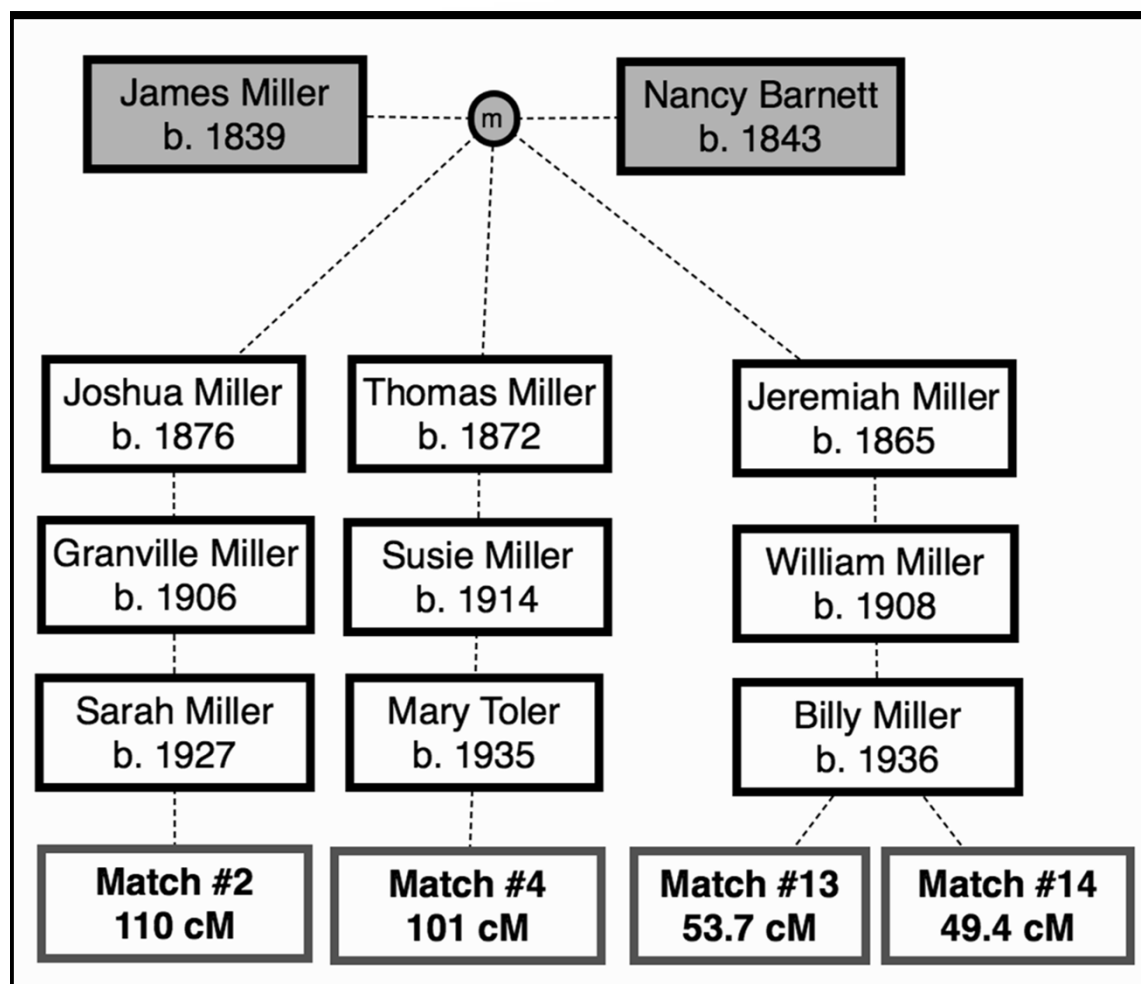
Genetic Network #1 = Ancestor

John C. Green, b.c. 1836

Matches #1, #3, #8 and #12

Descend from John C. Green and
Match #9 descends from his parents

Building Genetic Networks

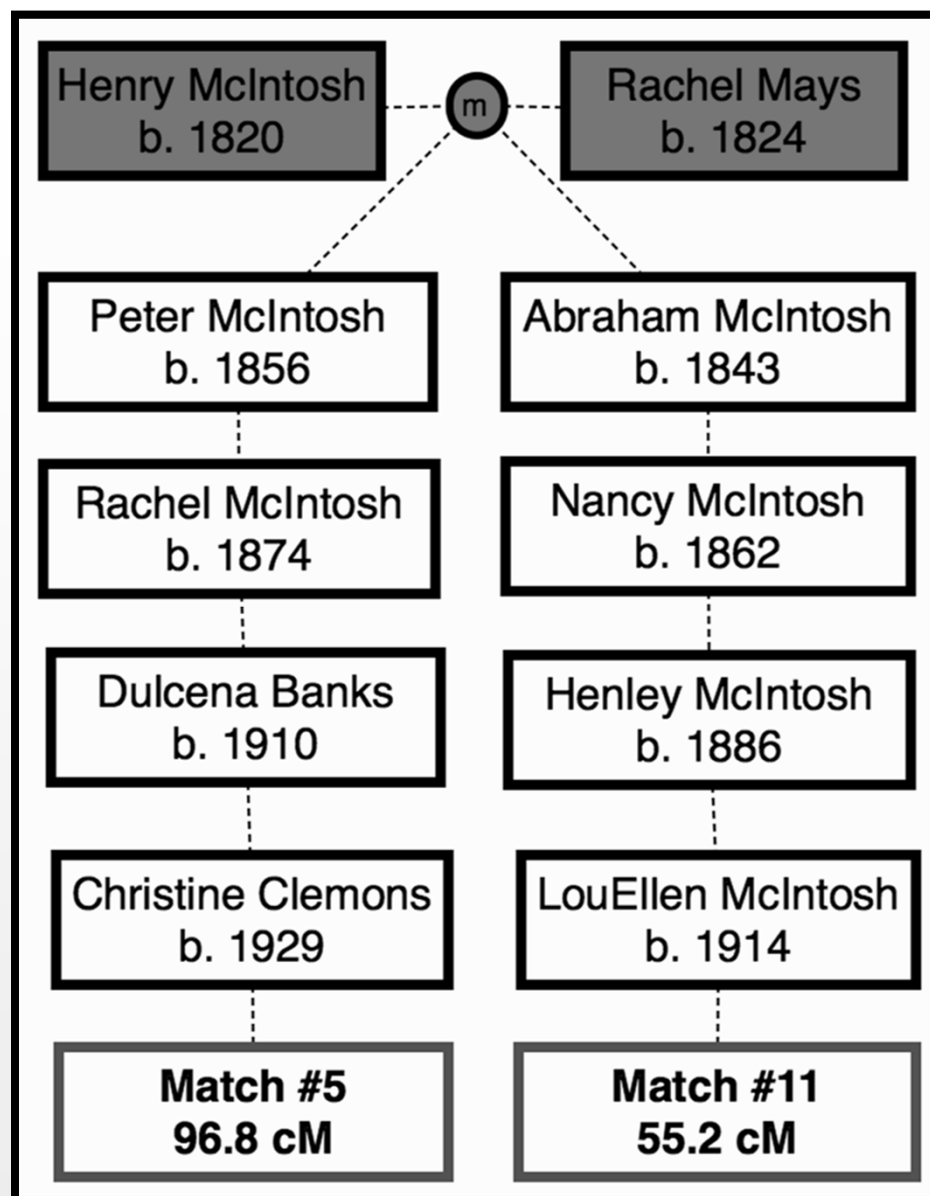


Grouping Matches

Tinsley Case = Four Separate Genetic Networks

Genetic Network #2 = Ancestral Couple
James Miller and Nancy Barnett
Matches #2, #4, #13 and #14
Descend from
James and Nancy Barnett

Building Genetic Networks



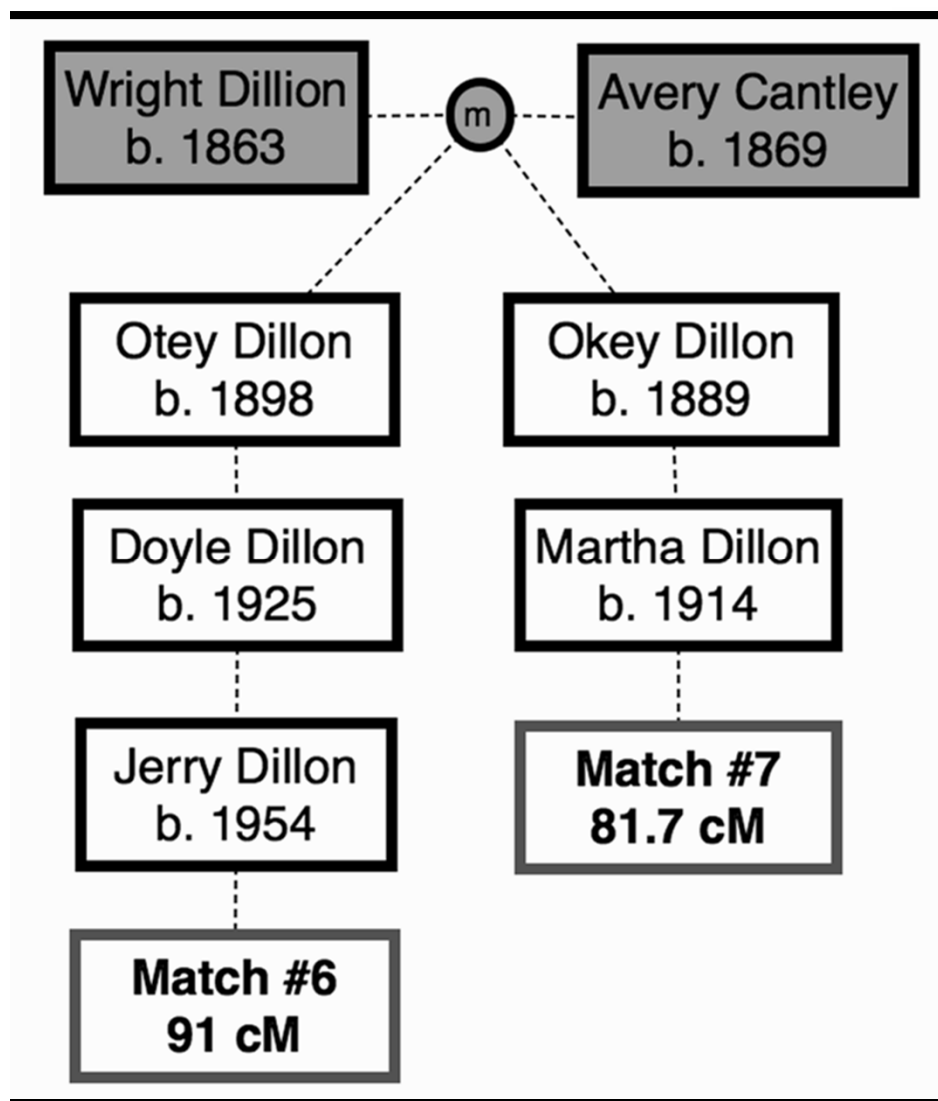
Grouping Matches

Tinsley Case = Four Separate Genetic Networks

Genetic Network #3 = Ancestral Couple
Henry McIntosh and Rachel Mays
Matches #5 and #11

Descend from Henry and Rachel McIntosh

Building Genetic Networks



Grouping Matches

Tinsley Case = Four Separate Genetic Networks

Genetic Network #4 = Ancestral Couple

Wright Dillion and Avery Cantley

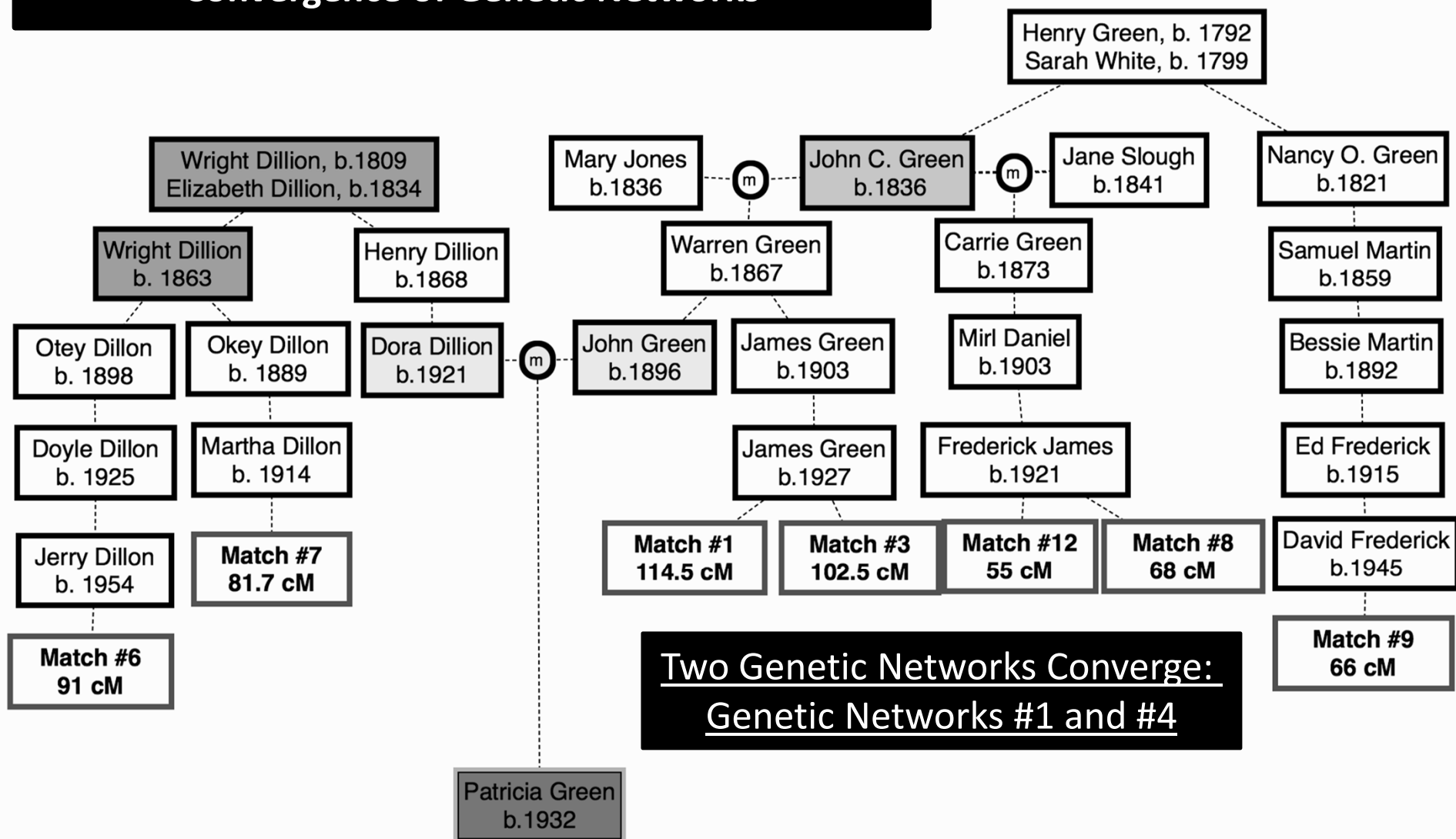
Matches #6 and #7

Descend from Wright Dillion and Avery Cantley

Triangulation



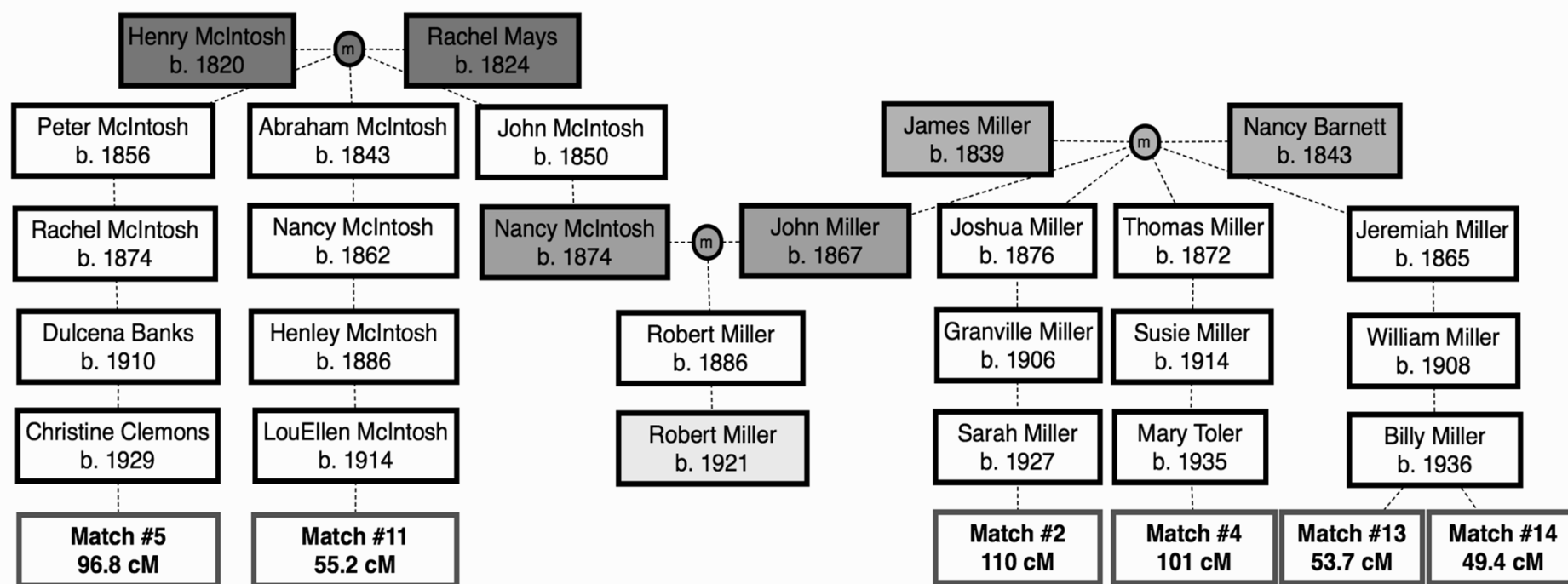
Convergence of Genetic Networks



Triangulation



Convergence of Genetic Networks

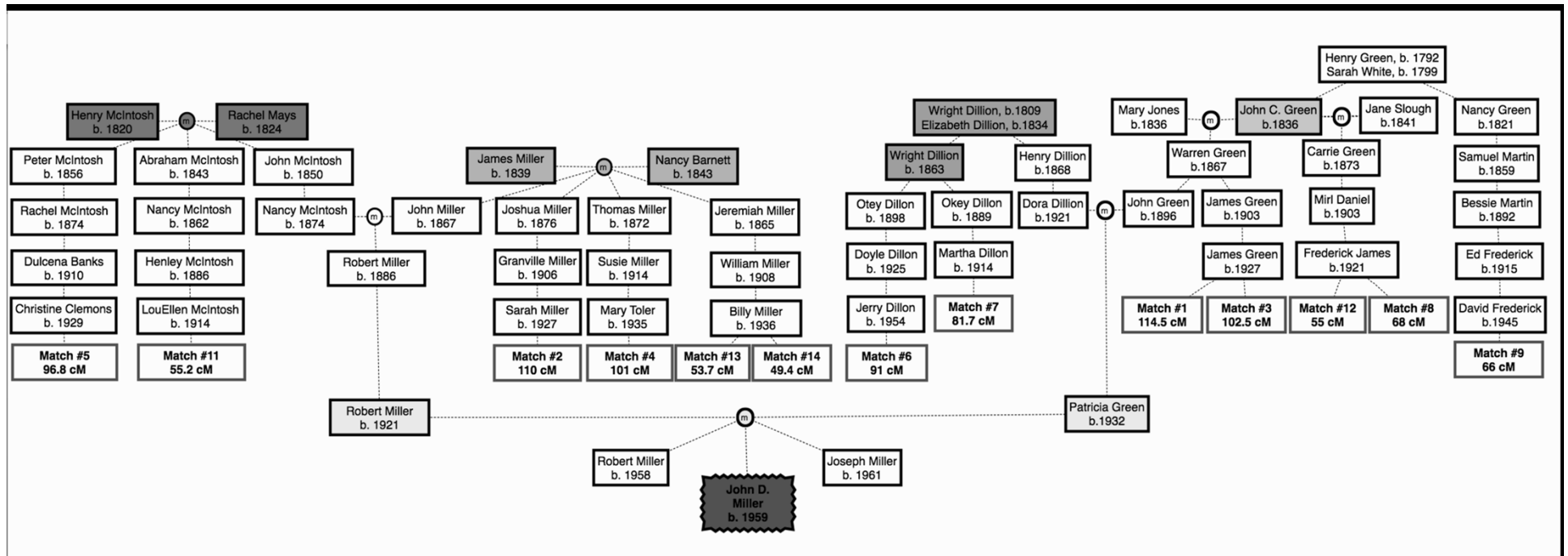


Two Genetic Networks Converge:
Genetic Networks #2 and #3

Convergence



Convergence of Genetic Networks Leads to Suspect

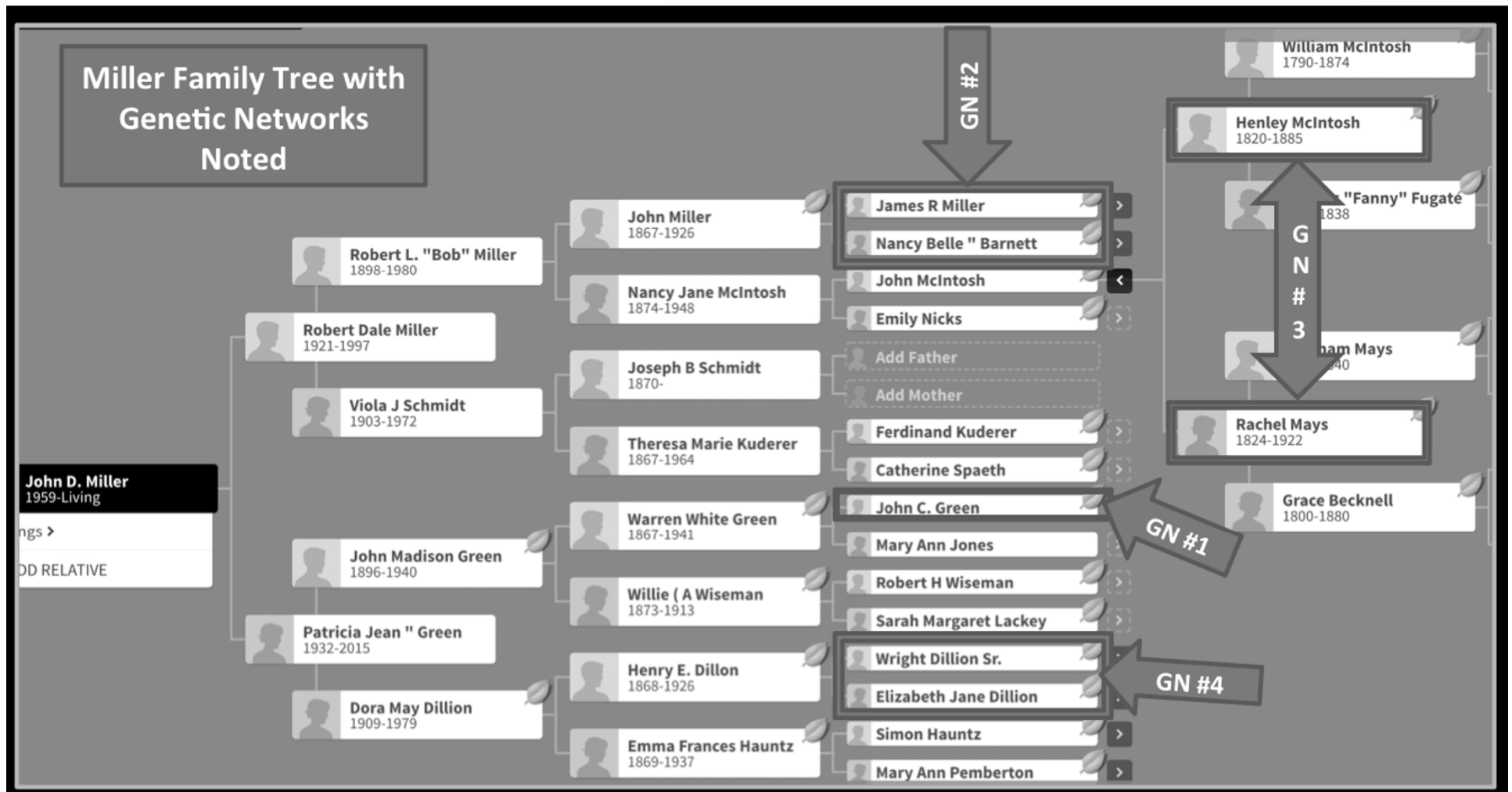


All four Genetic Networks converge through the marriage of Patricia Green and Robert Miller. They had three sons, including John D. Miller, b. 1959

Convergence



Convergence of Genetic Networks Leads to Suspect



WHAT THE HELL!

- CALL FROM PARABON, WE NEED TO HAVE A CONFERENCE CALL. (07-02-2018)
- I GATHER THE TEAM.
- WE WERE HOPING FOR A GRANDPARENT. WE DIDN'T GET IT! YOUR SUSPECT IS ONE OF TWO BROTHERS!
- WE JUST LOOKED AT EACH OTHER. I SAID HOLY S*** HE IS STILL ALIVE AND WE GOT THIS @\$!&%.

A FACE TO THE NAMES

- GENETIC GENEALOGY IDENTIFIES JOHN D MILLER OR HIS BROTHER JOSEPH MILLER AS A STRONG SUSPECT.
- NEITHER SUSPECT HAS EVER BEEN ON THE SUSPECT LIST.
- WE INSTANTLY RUN BOTH MEN IN THE LOCAL POLICE DATABASE AND CRIMINAL HISTORY CHECKS.
- WE SET UP SURVEILLANCE ON JOHN MILLER WITHIN TWO HOURS OF THE PARABON CONFERENCE CALL.

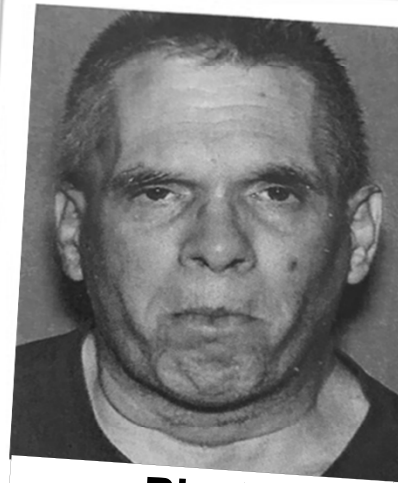
Snapshot Prediction Results

Composite Profile



Snapshot #04A015962-88F013861

PNL Document #15D30P05-14-00028



Photo

Predicted (■) & Excluded (☒) Phenotypes

Skin Color 2.7
Very Fair / Fair (98.2% confidence)
NOT Lt Olive / Dk Olive / Dark (98.2% confidence)

Eye Color 45.0
Hazel / Green (94.7% confidence)
NOT Blue / Brown / Black (94.7% confidence)

Hair Color 57.6
Brown / Black (96.0% confidence)
NOT Red / Blond (96.0% confidence)

Freckles 63.5
Few / Some (50.0% confidence)
NOT Zero (91.3% confidence)

Sex: Male ♂

Age: Unknown
(Age progressed to ~50 years)

Body Mass: Unknown
(Composite shown at BMI 23)

Ancestry: Central/
Eastern European



JOHN D MILLER

- LIVES IN GRABILL, IN WHICH IS JUST OUTSIDE FT. WAYNE, IN.
- HIS HOME IS WITHIN CLOSE PROXIMIY OF THE 2004 LETTER, PICTURE, AND CONDOMS.
- NO ADULT ARREST. ONE JUVENILE ARREST.
- IDENTIFIED AS A SUSPICIOUS PERSON IN 2002, AND 2003 MAKING SEXUAL COMMENTS TO WOMEN AND CHILDERN IN SHOPPING CENTER PARKING LOTS.

SURVEILLANCE

- DET. CLINT HETRICK (ISP) AND I START SURVEILLANCE ON 07-02-2018.
- WE DISCOVER JOHN MILLER LIVES ALONE.
- JOHN MILLER WORKS 3RD SHIFT AT WALMART, IN KENDALLVILLE, IN.
- DETECTIVES OBSERVE THAT JOHN MILLER MEETS WITH HIS BROTHER, JOSEPH MILLER IN AUBURN, IN.
- HIS TRAILER IS 200 FEET FROM A CITY PARK AND SOFTBALL FIELD.

SUSPECT'S VIEW



PARK AND BASEBALL FIELDS



TRASH PULL

- DETECTIVES MEET AND CONDUCT A COVERT TRASH PULL 07-06-2018.
- WE DISCOVER 3 USED CONDOMS.
- T.V. DINNERS/ WALMART COLA.
- DETECTIVES PACKAGE AND TRANSPORT THE EVIDENCE TO ISP LAB FOR TESTING.
- SURVEILLANCE CONTINUES.

TRASH/EVIDENCE



TRASH/EVIDENCE



SURVEILLANCE



SURVEILLANCE



ISP CONFIRMATION

- ON 07-09-2016 ISP LAB CALLS AND CONFIRMS THAT THE DNA FROM THE CONDOMS FROM JOHN D MILLER'S TRASH ON 07-06-2018 MATCHES THE SUSPECT OF THE APRIL TINSLEY ABDUCTION, RAPE, AND MURDER.
- THE DNA ALSO MATCHES THE CONDOMS LEFT WITH THE TAUNTING LETTERS AND PICTURES.
- JOHN MILLER'S DNA MATCHES PREVIOUSLY UNKNOWN PROFILE ON APRIL'S JACKET.

CONTACT WITH SUSPECT

- ON 07-15-2018 DET. CLINT HETRICK AND I APPROACH JOHN D MILLER.
- JOHN D MILLER HAD JUST GOT OFF WORK AT WALMART AND ARRIVED AT HIS TRALIER.
- JOHN MILLER ASK, "IS EVERYTHING O.K.?"
- JOHN MILLER AGREES TO ACCOMPANY DETECTIVES TO THE POLICE DEPT. TO TALK.

TRANSPORT

- DETECTIVES HAVE SMALL TALK WITH JOHN D MILLER ON THE WAY TO THE STATION.
- JOHN MILLER TELLS US THAT HE LIKES “COP” SHOWS, AND CROSSWORD PUZZLES.
- JOHN MILLER HAS LIVED IN THIS SAME TRAILER SINCE THE MID '80S.
- JOHN MILLER HAS AN INCREDIBLE MEMORY FOR DATES.

INTERVIEW

- DETECTIVES ADVISE JOHN D MILLER OF HIS RIGHTS.
- JOHN MILLER AGREES TO AN INTERVIEW.
- WE ASK JOHN MILLER WHY HE THINKS WE MIGHT WANT TO TALK TO HIM? JOHN REPLIES, "APRIL TINSLEY."
- JOHN MILLER STARTS TO TALK, THEN SAYS, "I CAN'T."

INTERVIEW CONTINUE

- DETECTIVES ARE ABLE TO KEEP JOHN MILLER TALKING.
- JOHN MILLER CONFESSES TO ABDUCTION, RAPE, AND MURDER OF APRIL MARIE TINSLEY.
- JOHN GIVES VERY SPECIFIC DETAILS AND TIMES OF THE ABDUCTION, RAPE , AND MURDER.
- JOHN MILLER APPEARS TO BE RELIVING THE CRIME AS HE IS CONFESSING.

WHAT WE LEARNED

- JOHN MILLER HAS HISTORY OF SEXUAL ASSAULT AS A MINOR.
- JOHN MILLER SPENT TIME IN BOYS SCHOOL AND JUVENILE DETENTION FACILITY.
- JOHN MILLER TRIED AN ABDUCTION WHEN HE WAS 17 YEARS OLD, BUT VICTIM FOUGHT BACK SO HE RAN OFF.
- JOHN MILLER HAS BEEN OUT LOOKING FOR NEW VICTIM BUT COULD NOT FIND AN OPPORTUNITY.

CONTINUED

- JOHN MILLER ADVISED HE HAD A HOMOSEXUAL RELATIONSHIP TO FULLFILL HIS SEXUAL DESIRES, THAT PARTNER WENT IN A NURSING HOME SO THAT ENDED RELATIONSHIP.
- JOHN MILLER ADVISED HE SITS IN HIS TRAILER AND MASTURBATES IN CONDOMS WHILE WATCHING HOMOSEXUAL PORN.
- JOHN MILLER USES THE CONDOMS TO MASTURBATE. (HE SAYS HE DOESN'T WANT TO GET MESSY.)

NEW FACTS FROM INTERVIEW

- JOHN MILLER TELLS US THAT IT TOOK 2 DAYS FOR US TO FIND APRIL'S BODY IN THE DITCH, AND HE HAD ACTUALLY DROVE BY THE DUMP SITE THE NEXT DAY.
- JOHN MILLER TELLS US THAT IT TOOK 2 MONTHS FOR ANYONE TO NOTICE THE WRITING ON THE BARN.
- JOHN NEVER HAD A BLUE TRUCK. HE WAS DRIVING A BLUE MERCURY LYNX.

CONFESSION LETTER

I SAW April L. Tinsley Walking Down
the side walk I was standing By my
car I Grab her and told her not scream
put her on My car and drive out my
trailer and we walk inside and i carry
her Back Bedroom and had sex with her
After I kill her, then early next day
to County Road 68 dump her Body in the
Pitch

Adam D. Miller 7/15/18

GENETIC GENEALOGY SUCCESS

- ▣ As of June 12 2019, Parabon has provided police with leads resulting in > 60 positive identifications.
- ▣ This number does not include other identifications made by FBI, state and local law enforcement organizations or other labs performing genetic genealogy.