




---

---

---

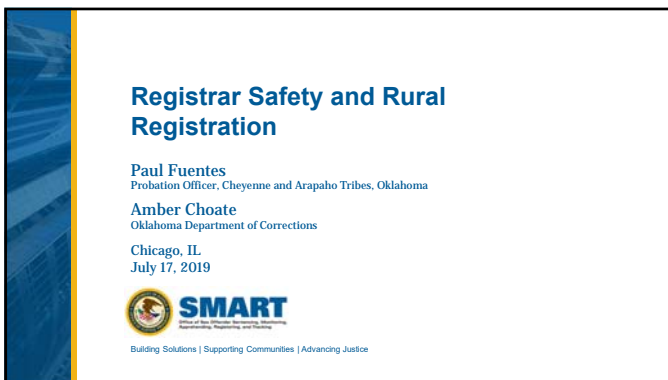
---

---

---

---

---




---

---

---

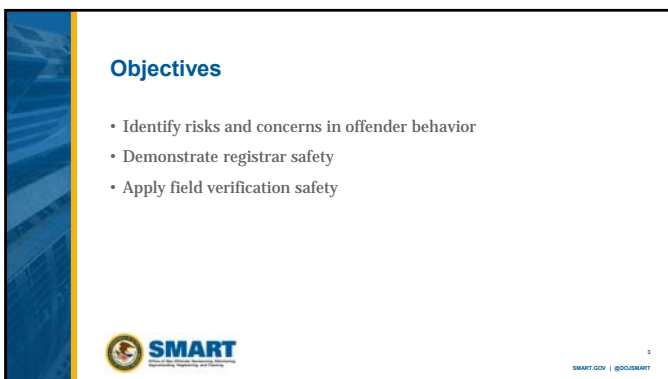
---

---

---

---

---




---

---

---

---

---

---

---

---



---

---

---

---

---


---

---

---

**Sexual Characteristics**

- Tendencies
- Target of choice
- Victim access
- Related/unrelated victims
- Undetected deviant sexual behaviors



SMART.GOV | @POLISMART

---

---

---

---

---

---

---

---

**Aggression And Violence**

- History of violence
- Domestic violence
- Controlling nature
- Violent opinions
- Access to weapons



SMART.GOV | @POLISMART

---

---

---

---

---

---


---

---

**Mental Health And Substance Abuse Conditions**

- Mental health disorders
- Personality disorders
- Suicidal ideation
- Substance abuse or dependency issues
- Rooted in drug culture

*It is important to be able to recognize individuals in a state of crisis and how to access help for them.*



SMART  
Supporting Mental Health and Recovery

SMART.GOV | @GOLDSMART

---

---

---

---

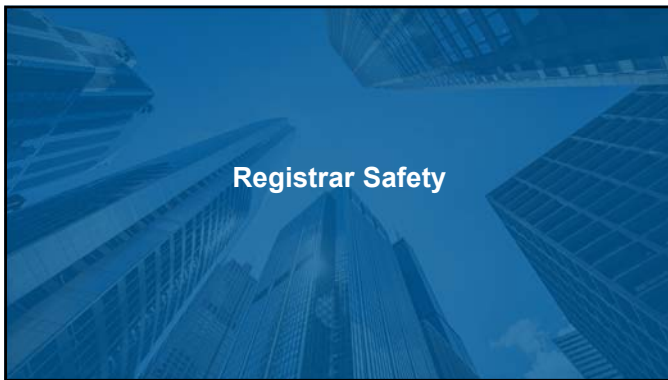
---

---

---

---

**Registrar Safety**



---

---

---

---

---


---

---

---

**Risk Analysis and Mitigation**

- Facility and property exposed to risk?
  - Uneven floors, exposed electrical wiring, poor lighting
- People exposed to risk?
  - Public, Sex offender, new employees, untrained workers
- Discuss worst-case scenarios
- Prioritize risks



SMART  
Supporting Mental Health and Recovery

SMART.GOV | @GOLDSMART

---

---

---

---

---

---

---

---

### Risk Analysis and Mitigation (cont.)

- Prepare observations and recommendations
- Identify protocols and practices for clients when entering building and or office
  - Client screening
  - Client attire/bags
  - Client access/entrance to office space
  - Offender Shoots Parole Officer
- Share/establish expectation with client




---

---

---

---

---

---

---

---

### Personal Safety

- Partner to observe or assist
- Keep safe distance
- Never have your back toward the person
- Have an escape plan




---

---

---

---

---

---

---

---

### Personal Safety (cont.)

- No personal identifiers
- Social media awareness
- Keep personal life private




---

---

---

---

---

---

---

---

### Security Controls and Risk Management

- Secure all weapons before entering
- Search room prior to and after an interview
- Simple desk and chairs
- No heavy, large or sharp objects
- Away from general public and noise



---

---

---

---

---

---

---

---

### Maintaining Safety During Registration

- Assemble forms for offender to complete beforehand
- Assess offender body language, attitude and safety risks
- Assess your own nonverbal actions and attitude
- Stay calm and confident
- Non-confrontational while completing forms and processing



---

---

---

---

---

---

---

---

### Building Rapport With Registrant

- Practice active listening
- Help identify their network of support
- Encourage consistency and self-control
- Recognize their success
- Demonstrate empathy and concern
- Offer resources such as mental health services



---

---

---

---

---

---

---

---

### Utilizing Technology

- Walkthrough metal detector
- Wand hand-held metal detector
- Security cameras

*Implementation of screening devices should always be approved by administration/governing body.*




---

---

---

---

---

---

---

---

### Field Verification Safety

---

---

---

---

---

---

---

---

### Personal Safety in the Field

- Dress in a manner that —
  - Assists you in performing your duties
  - Helps identify your official capacity
  - Allows you ease of movement
  - Does not create additional risks or allow someone to control you (lanyard, scarf, neck tie)
  - Wear ballistic vest if available




---

---

---

---

---

---

---

---

### Personal Safety in the Field (cont.)

- Advise dispatch, supervisor or another person where you are going
  - Written itinerary in order of when you are attempting verifications
- Take a partner
  - Safety in numbers
  - Jeffery M. McCoy
- Trust your instincts for threat assessment
  - It's OK to come back later!




---

---

---

---

---

---

---

---

### Personal Safety in the Field (cont.)

- Warrant check before going to the home
  - Active warrants could cause offender to become an increased safety risk
- Know offender's work/treatment schedule
- Ideally conducted in daylight hours
- If possible, do not schedule visit ahead of time
  - Sporadic and unscheduled home visits are best




---

---

---

---

---

---

---

---

### Safely Approach the Home

- Know offender's case
- Know location of residence prior to arriving, aerial/street view google map
- Know who else lives in the home
- Park a house or two away and leave clear escape path
  - If on a dead-end road or rural setting, park tactically
- Check communication device for channel and battery level




---

---

---

---

---

---

---

---

### Safely Approach the Home (cont.)

- Call in any vehicle plates, colors and make
- Assess environment before you get out of the car
  - Come back later if environment seems high risk (lots of cars/people, etc.)
- Be alert for animals, snakes, insects
- Keep keys in your hand (non-dominant hand if carrying weapon)
- Move to side of door before you knock
  - Make sure you and your partner are not in front of windows




---

---

---

---

---

---

---

---

### Safety Inside the Home

- Body mechanics, balanced stance, supportive stance, weapon bladed away
- Never close off your escape route or box yourself in
  - Fatal funnel (doorways, stairwells, hallways)
- Always ask who else is in the residence
- Quickly scan kitchens or areas where dangerous items can be located
- Watch their hands
- While you focus on offender, have partner observe home environment




---

---

---

---

---

---

---

---

### Safety Inside the Home (cont.)

- While walking through home, have offender in front of you
  - Never turn your back on an offender or others, even when exiting the home
- Make sure home is well lit before proceeding with visit
  - Always carry a flashlight in case of low lighting or no power
- Have the offender sit if in home for extended timeframe after walkthrough
- Sit on hard areas, instead of sofas or couches
  - If soft seating area is only seating available, search area before offender sits




---

---

---

---

---

---


---

---



**Oklahoma Deputy Fatally Shoots Suspect Who Stabbed Him**

- <https://www.youtube.com/watch?v=vOMNaJXparE>



SMART  
Supporting the Mission of the Oklahoma State Police

25  
SMART.GOV | @OKSMART

---

---

---

---

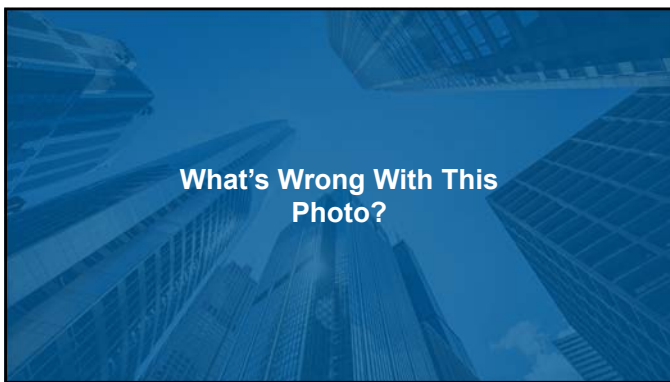
---

---

---

---

**What's Wrong With This Photo?**



---

---

---

---

---

---

---

---



SMART  
Supporting the Mission of the Oklahoma State Police

27  
SMART.GOV | @OKSMART

---

---

---

---

---

---

---

---



---

---

---

---

---

---

---

---



---

---

---

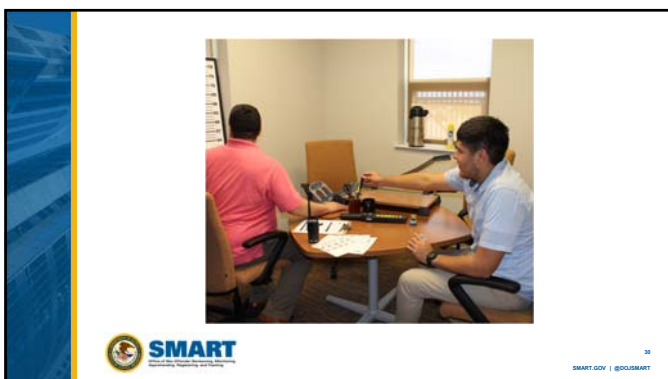
---

---

---

---

---



---

---

---

---

---

---

---

---



---

---

---

---

---

---

---

---



---

---

---

---

---

---

---

---



---

---

---

---

---

---

---

---



---

---

---

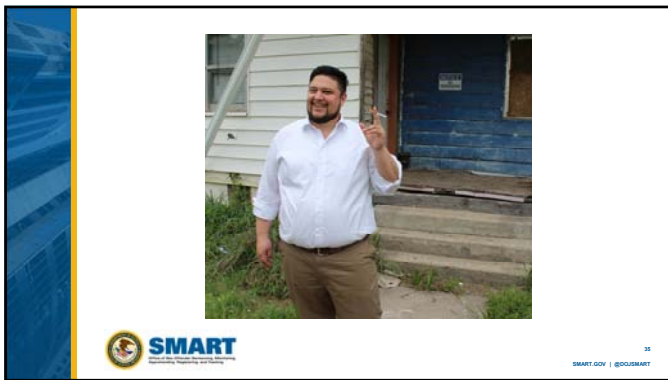
---

---

---

---

---



---

---

---

---

---

---

---

---



---

---

---

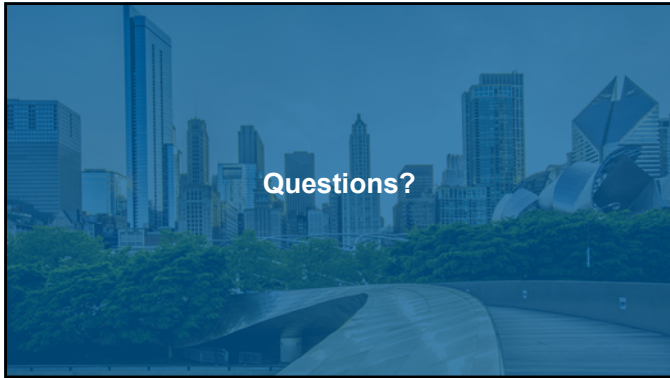
---

---

---

---

---




---

---

---

---

---

---

---

---

<p><b>Paul Fuentes</b>          Probation Officer          Cheyenne and Arapaho Tribes, Oklahoma          Judicial Branch          405-422-7760  <a href="mailto:pfuentes@cheyenneandrapaho-nsn.gov">pfuentes@cheyenneandrapaho-nsn.gov</a></p>	<p><b>Amber Choate</b>          Training Officer          Probation and Parole Office IV          Probation and Parole Services          Oklahoma Department of Corrections          405-693-1352 (c)          405-364-2365  <a href="mailto:amber.choate@doc.ok.gov">amber.choate@doc.ok.gov</a></p>
<p><b>SMART Office</b>          Office of Justice Programs          U.S. Department of Justice</p>	
<p>810 Seventh St. NW          Washington, DC 20531          Phone: 202-514-4689</p>	<p>Twitter: @DOJSMART          Facebook: @DOJSMART          Facebook: @NSOPW</p>
	

---

---

---

---

---

---

---

---

Thank you.



Building Solutions | Supporting Communities | Advancing Justice

---

---

---

---

---

---

---

---